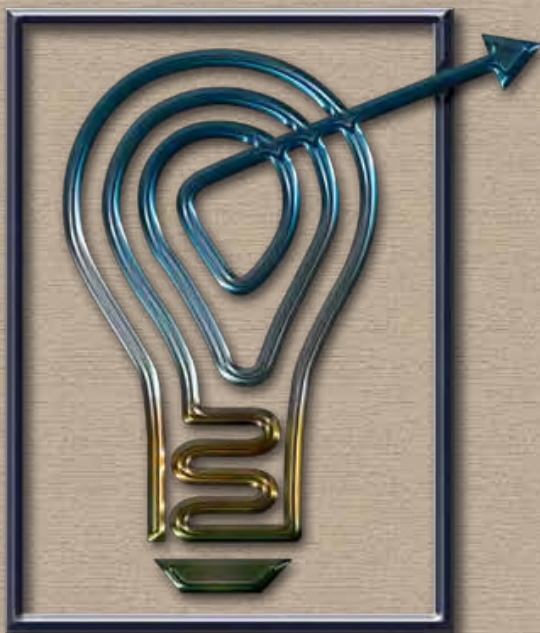


# **From Research to Action: Seeking Solutions**



**September 9–11, 2005  
Sacramento Convention Center  
and  
Hyatt Regency Sacramento at Capitol Park**

**Jointly sponsored by the California Breast Cancer Research Program  
and the  
University of California, Davis, Health System  
Continuing Medical Education**



[www.cbcpr.org](http://www.cbcpr.org)





CALIFORNIA  
Breast  
Cancer  
Research  
PROGRAM

Address: California Breast Cancer Research Program  
University of California, Office of the President  
300 Lakeside Drive, 6<sup>th</sup> Floor  
Oakland, CA 94612-3550

Phone: 888 313-BCRP (2277)  
Fax: 510 587-6325  
E-mail: [cbcrp@ucop.edu](mailto:cbcrp@ucop.edu)

Website: [www.cbcrp.org](http://www.cbcrp.org)

General Symposium Information

# Contents

|   |       |
|---|-------|
| DIRECTOR'S WELCOME .....                                  | 3     |
| CONTINUING MEDICAL EDUCATION CREDITS .....                | 4     |
| FINANCIAL DISCLOSURES .....                               | 5-6   |
| ACCOMMODATION AND TRAVEL INFORMATION .....                | 8     |
| SYMPOSIUM LOCATION .....                                  | 9     |
| SYMPOSIUM AT A GLANCE.....                                | 10    |
| CONVENTION CENTER FLOOR PLAN.....                         | 11    |
| HYATT REGENCY SACRAMENTO FLOOR PLAN .....                 | 12    |
| FRIDAY PROGRAM  |       |
| WELCOME and PLENARY POSTER SESSION .....                  | 15    |
| WORKSHOPS.....  | 16-17 |
| CBCRP LISTENS .....                                       | 17    |
| RECEPTION ... ..  | 19    |
| ART EXHIBITION.....                                       | 20-25 |
| EXHIBITOR SHOWCASE .....                                  | 27    |
| SATURDAY PROGRAM  |       |
| MEET THE EXPERTS BREAKFAST SESSION .....                  | 30-31 |
| WELCOME .....   | 32    |
| PLENARY SESSION—THE UNEQUAL BURDEN OF BREAST CANCER ..... | 34-37 |
| CONCURRENT BREAKOUT SESSIONS, MORNING .....               | 38    |
| KEYNOTE LUNCHEON .....                                    | 40-41 |
| CONCURRENT BREAKOUT SESSIONS, AFTERNOON .....             | 42    |
| POSTER PRESENTATIONS with ADVOCATE GUIDES .....           | 44    |
| POSTER SESSION A.....                                     | 45-46 |
| POSTER SESSION B .....                                    | 47-48 |
| POSTER SESSION C .....                                    | 49-50 |
| POSTER SESSION D.....                                     | 51-52 |
| CLOSING CEREMONIES .....                                  | 52    |
| SUNDAY PROGRAM .....                                      | 54    |
| WORKSHOPS.....  | 54-55 |
| ABOUT THE CBCRP .....                                     | 56    |

## DIRECTOR'S WELCOME



### A Light Shining Through

Almost daily, people ask me what new and exciting results are being produced by CBCRP research. And almost daily, I struggle with how to answer this question. I struggle for many reasons. First, I abhor the way the media sensationalizes the results of single research projects—touting them as “breakthroughs”, promising “new treatments” or “cures.” In reality, breakthroughs are rare events, and most advances in prevention, detection, and treatment take years and result from numerous studies. And so I am cautious in describing the advances our research is making. Second, we fund a breathtaking array of research, including basic laboratory research into cancer pathways, drug discovery, population research

on causes and prevention, testing of new detection technologies, exploration of cultural views towards cancer and how they impact medical care and quality of life, and development of methods to reduce the psychological impact of breast cancer. How can I summarize the progress we are making in all these areas before the elevator door opens? Finally, I am painfully aware of the slow pace of research, and the urgency to find answers NOW. While I believe we are on the right path, we won't know until we actually achieve true prevention and cure that each small step along the way was truly exciting.

But every two years, this struggle drops away. As I sit through the presentations, walk through the aisles of posters, view the expressions of breast cancer in the art exhibition, interact with the hundreds of scientists and advocates in attendance, and participate in the “moment of noise”—all elements of the CBCRP symposium—I become acutely aware of the immense progress we are making in so many facets of breast cancer research. I become renewed in my belief that we are on the right path and closing in on our goal of ending the suffering caused by breast cancer.

The CBCRP symposium arose in 1997 out of our values of accountability and transparency; our responsibility to answer to Californians and demonstrate our progress towards eliminating the suffering from breast cancer.

Transparency is talked about a lot these days—most frequently in the sense of a quality of an organization or process that provides full, accurate, and timely disclosure of information. But I recall another meaning—the clear plastic sheets that we used to view images and text by shining light through them and projecting them onto a screen. And this is how I like to think of the symposium—the method by which we shine light through the CBCRP to view our progress and project it for all to see.

But our symposium evolves each time we do it, and becomes more than our transparency. It is becoming a tool to express our urgency to put research into practice and achieve outcomes that impact people's lives. Even more so than in past years, the 2005 symposium will allow us to seek solutions to the problem of breast cancer. Because when research provides a potential answer to a question, it is the CBCRP's mission to go forward with putting it into practice.

In the plenary session, *The Unequal Burden of Breast Cancer*, panelists will discuss not only who is getting breast cancer and who is dying from it, but also will put forward ways that we can address the discrepancy. In the workshops, speakers will describe the state of the science in promising new areas—nanotechnology, the mind-body connection, clinical trials, and biomonitoring. Speakers and participants together will then explore the ways that these areas of science could be put to use.

Keynote speakers will emphasize the forward thinking of the symposium from a survivor and scientific perspective: Don't look back, we're not going that way! Come join us as we shine a light through breast cancer research, and illuminate solutions for the future.

Mhel Kavanaugh-Lynch, M.D., M.P.H.  
Director, California Breast Cancer Research Program

A handwritten signature in black ink that reads "Mhel Kavanaugh-Lynch".

# CONTINUING MEDICAL EDUCATION CREDITS



## Disclosure

Consistent with UC Davis policy, faculty are expected to disclose any significant financial interests or other relationships with manufacturers of commercial products and/or providers of commercial services discussed in their presentations. The intent of this disclosure is not to prevent speakers with significant financial or other relationships from making presentations, but rather to provide listeners with information on which they can make their own judgments. A complete faculty disclosure statement and acknowledgment of commercial support for this program will be provided at the activity.

## Accreditation: Up to 18 Hours of Category 1 Credit

This activity has been planned and implemented in accordance with the Essential Areas and Policies of the Accreditation Council for Continuing Medical Education (ACCME) through the joint sponsorship of Continuing Medical Education at UC Davis Health System and the California Breast Cancer Research Program. Continuing Medical Education of the UC Davis Health System is accredited by the ACCME to provide continuing medical education for physicians.

Physician Credit: Continuing Medical Education of the University of California, Davis, Health System (School of Medicine, Medical Center, and Medical Group) designates this continuing medical education activity for up to 18 credit hours in Category 1 of the Physician's Recognition Award of the American Medical Association and the Certification Program of the California Medical Association. Each physician should claim only those hours of credit that he/she actually spent in the educational activity.

AAFP: This activity has been reviewed and is acceptable for up to 15.25 prescribed credits by the American Academy of Family Physicians.

The following may apply CME Category 1 credit for license renewal:

Physician Assistant: The National Commission on Certification of Physician Assistants (NCCPA) states that AMA accredited Category 1 courses are acceptable for continuing medical education requirements for recertification.

Psychologist: This educational activity is recognized by the California Board of Psychology as meeting the continuing education requirements toward license renewal for California psychologists (self reporting required).

Registered Nurse: The California State Board of Registered Nursing accepts Category 1 hours toward renewal. On the BRN license renewal form, report the number of hours you attended (up to 18 hours of credit) and fill in "CME Category 1" for provider number.

## Additional Accreditation

MFT and LCSW: UC Davis Health System Continuing Medical Education, Provider No. PCE 2354. This course meets the qualifications for 18 hours of continuing education credit for marriage and family therapists and/or licensed clinical social workers as required by the California Board of Behavioral Sciences. Participants must attend the entire course, write license number on the roster, and complete the course evaluation to earn credit.

## Procedure for Receiving Continuing Medical Education Credits

Register at the CME registration desk at the symposium and pay a \$25.00 CME registration fee. Payments must be made by check payable to the University of California Regents.

## Learning Objectives

By the end of this course, participants will be able to:

- Understand and present to colleagues and patients the latest advances in the biology of breast cancer; in particular, gain an understanding of how the molecular and cellular pathogenesis of breast cancer will allow the development of new and improved strategies to prevent and treat breast cancer
- Learn about new targets and strategies for detection, diagnosis, prevention, and treatment of breast cancer and ways to improve patient quality of life
- Comprehend and describe to colleagues and patients the steps involved in transforming the results of basic research into clinical applications
- Understand and present to colleagues and patients how external factors and hormones are involved in the etiology, prevention, and treatment of breast cancer
- Better appreciate the needs of breast cancer patients, their family members, and women at risk for breast cancer

# FINANCIAL DISCLOSURES

## Presenters that may include discussion of commercial products or services:

Mark Pegram, M.D. University of California, Los Angeles  
*Consultant, Genentech, Aventis, Inc., Pfizer, Inc., Bristol-Meyers Squibb, GlaxoSmithKline*

Michael Phelps, Ph.D. University of California, Los Angeles  
*Owned stock in CTI/Siemens but all stock was sold 5/05 so at this time, I have no financial relationship to this or any other companies*

## Nothing to Disclose:

|                                     |  |
|-------------------------------------|--|
| Barbara Balaban                     | West Islip Breast Cancer Coalition                   |
| Mary Helen Barcellos-Hoff, Ph.D.    | Lawrence Berkeley National Laboratory                |
| Dana Bovbjerg, Ph.D.                | Mount Sinai School of Medicine                       |
| Julie Bower, Ph.D.                  | University of California, Los Angeles                |
| DeShawn Boyd                        | California Breast Cancer Research Program            |
| Robert Cardiff, M.D., Ph.D.         | University of California, Davis                      |
| Natalie Collins, M.S.W.             | California Breast Cancer Research Program            |
| Janna Cordeiro, M.P.H.              | California Breast Cancer Research Program            |
| Shanaz Dairkee, Ph.D.               | California Pacific Medical Center                    |
| Brenda Dixon-Coby                   | California Breast Cancer Research Program            |
| Lyn Dunagan                         | California Breast Cancer Research Program            |
| Shelley Enger, Ph.D.                | Kaiser Permanente, Southern California               |
| Laurence Fitzgerald, Ph.D.          | California Breast Cancer Research Program            |
| Ann Fonfa, B.P.S.                   | The Annie Appleseed Project                          |
| James Ford, M.D.                    | Stanford University                                  |
| Patricia Ganz, M.D.                 | University of California, Los Angeles                |
| Leroy Hood, M.D., Ph.D.             | Institute for Systems Biology                        |
| Lovell Jones, Ph.D.                 | University of Texas MD Anderson Cancer Center        |
| Marion Kavanaugh-Lynch, M.D., Ph.D. | California Breast Cancer Research Program            |
| Hillary Klonoff-Cohen, Ph.D.        | University of California, San Diego                  |
| Kristen Kulp, Ph.D.                 | Lawrence Livermore National Laboratory               |
| Allison Kurian, M.D.                | Stanford University School of Medicine               |
| Linda Luecken                       | Arizona State University                             |
| Katherine McKenzie, Ph.D.           | California Breast Cancer Research Program            |
| Shiraz Mishra, M.D., Ph.D.          | University of Maryland                               |
| Jill Mitchell                       | University of California, Los Angeles                |
| Satyabrata Nandi, Ph.D.             | University of California, Berkeley                   |
| Thomas R. Nelson, Ph.D.             | University of California, Davis                      |
| Eric Noguchi                        | California Breast Cancer Research Program            |
| Kim Pierce                          | Los Angeles Breast Cancer Alliance                   |
| Marj Plumb, M.N.A.                  | Leading Spirit                                       |
| Michele Rakoff                      | Breast Friends Long Beach Memorial Medical Center    |
| Catherine Saiki                     | (no affiliation)                                     |
| Ana Soto, Ph.D.                     | Tufts University                                     |
| Sandra Millon-Underwood             | University of Wisconsin Milwaukee College of Nursing |
| Marcia Wallace                      | (no affiliation)                                     |
| Sandy Walsh                         | CABCO, Y-Me Davis                                    |
| Danny Welch, Ph.D.                  | University of Alabama, Birmingham                    |
| David Wellisch, Ph.D.               | University of California, Los Angeles                |
| Christine White, M.D.               | Biogen Idec  |
| William E. Wright, Ph.D.            | California Cancer Registry                           |
| Anna H. Wu, Ph.D.                   | University of Southern California                    |
| Douglas Yee, M.D.                   | University of Minnesota                              |

## No Response:

Dorothy Bainton, M.D. University of California, San Francisco

Jeff Balkora, Ph.D. University of California, San Francisco

Sanford Barsky, M.D. Ohio State University

# FINANCIAL DISCLOSURES

*Continued from previous page*

|                                     |   |
|-------------------------------------|---|
| Caroline Bliss-Isberg, Ph.D.        | WomenCARE   |
| Dana Bovbjerg, Ph.D.                | Mount Sinai School of Medicine  |
| Kathleen Brown, M.D.                | Association of Black Women Physicians   |
| Beverly Burns, M.S., L.A.C.         | Charlotte Maxwell Complementary Clinic  |
| Michael Clarke, M.D.                | University of Michigan  |
| Vicki Davis, Ph.D.                  | Duquesne University   |
| Brunie Felding-Habermann, Ph.D.     | The Scripps Research Institute  |
| Mary Ann Foo, M.P.H., C.H.E.S.      | Orange County Asian & Pacific Islander Health Alliance  |
| Lauren Franklin                     | MHU Collaborative   |
| Janine Giese-Davis, Ph.D.           | Stanford University   |
| Sharon Goodrich                     | National Breast Cancer Coalition  |
| James Heath, Ph.D.                  | California Institute of Technology  |
| Robert Hiatt, M.D., M.P.H.          | University of California, San Francisco, Comprehensive Cancer Center                                    |
| Leroy Hood, M.D., Ph.D.             | Institute for Systems Biology   |
| Dave Hoon, Ph.D.                    | John Wayne Cancer Institute   |
| Richard Jackson, M.D., M.P.H.       | California Department of Health Services  |
| Joyce Lashof, M.D.                  | University of California, Berkeley  |
| Linda Leucken                       | Arizona State University  |
| M. Ellen Mahoney, M.D., F.A.C.S.    | Community Breast Health Project   |
| Holly Mitchell                      | Crystal Stairs, Inc   |
| Jill Mitchell, M.D.                 | University of California, Los Angeles   |
| Rachel Morello-Frosch, Ph.D.        | Center for Environmental Studies & Department of Community Health, School of Medicine, Brown University |
| Thomas Nelson, Ph.D.                | University of California, San Diego   |
| Sara O'Donnell                      | Mendocino Cancer Resource Center  |
| Julie Ohnemus, M.D.                 | Humboldt Community Breast Health Project  |
| Kenneth Olden, Ph.D., Sc.D., L.H.D. | National Institute of Environmental Health Sciences and the National Toxicology Program                 |
| Debra Oto-Kent, M.P.H.              | Health Education Council  |
| Rebecca Rausch, M.S., Ph.D.         | University of California, Los Angeles   |
| David Reese, M.D.                   | University of California, Los Angeles, Translational Oncology Research Program                          |
| Gina Solomon, M.D., M.P.H.          | Natural Resources Defense Council   |
| Ana Soto, Ph.D.                     | Tufts University  |
| Sandra Stanford                     | Alamo Breast Cancer Foundation  |
| Dee West, Ph.D.                     | Northern California Cancer Center   |



# WORKING TOGETHER TO MAKE THE SYMPOSIUM HEALTHIER

CBCRP has carefully evaluated its meeting and identified ways to conserve and recycle, and to promote good health. Together we can make this event informative, healthy and environmentally friendly.

## **What the CBCRP is Doing:**

- Sponsoring free Yoga classes on Friday and Saturday
- Making the symposium a non-smoking event
- Providing healthy food options at every meal and food break (fruit and vegetables, water)
- Serving organic produce when possible (based on market availability and cost)
- Donating surplus food to local charities
- Reducing use of the plastic products in our food service
- Minimizing the use of individual food and beverage containers
- Producing all symposium materials on recycled chlorine-free paper using soy-based ink
- Providing symposium materials (bags, pens) on a voluntary rather than automatic basis. You want one, you take one.

## **What You Can Do:**

- Bring refillable containers for water and coffee
- Join us at the Yoga classes
- Take full advantage of recycling receptacles
- Remember to recycle your Name badge.
- If you're staying at the Hyatt Regency Sacramento, conserve water and energy by not having your sheets and towels serviced every day

We would like to thank the Sacramento Convention Center, the Hyatt Regency Sacramento and you for helping to make this symposium a healthier one.

# Accommodation and Travel Information

## Hotel Accommodations

Hyatt Regency Sacramento at Capitol Park  
1209 L Street  
Sacramento, California 95814  
Tel: 916 443-1234  
Fax: 916 321-3099

## Directions to the Hyatt Regency Sacramento and the Sacramento Convention Center

(Located across the street from each other)

From Oakland, San Francisco, San Jose

Take I-80 East to Sacramento

Take Capitol City Freeway turn-off

Take I-5 Freeway (Redding turn-off)

Take "J" Street Exit (one-way street, East)

Take "J" Street to 12th Street

The hotel is at 12th St. and "L" St. The Convention Center is on J St.

From Auburn, Roseville, Placerville

Take the I-80-BL/CAPITAL CITY FWY exit- EXIT 95- toward CA-99 S/SACRAMENTO.

Take the I-80-BR exit- EXIT 14A- on the LEFT toward SACRAMENTO/AUBURN BLVD.

Merge onto CAPITAL CITY FWY.

Merge onto CA-160 S toward DOWNTOWN SACRAMENTO.

Turn LEFT onto N 12TH ST/CA-160 S. Continue to follow N 12TH ST.

Turn LEFT onto J ST.

From Manteca, Stockton

Take CA-99 N toward SACRAMENTO.

Merge onto CA-120 W toward MANTECA/SAN FRANCISCO.

Merge onto I-5 N toward STOCKTON/SACRAMENTO.

Take the J STREET exit toward DOWNTOWN.

Turn SLIGHT RIGHT onto J ST.

From the Sacramento International Airport:

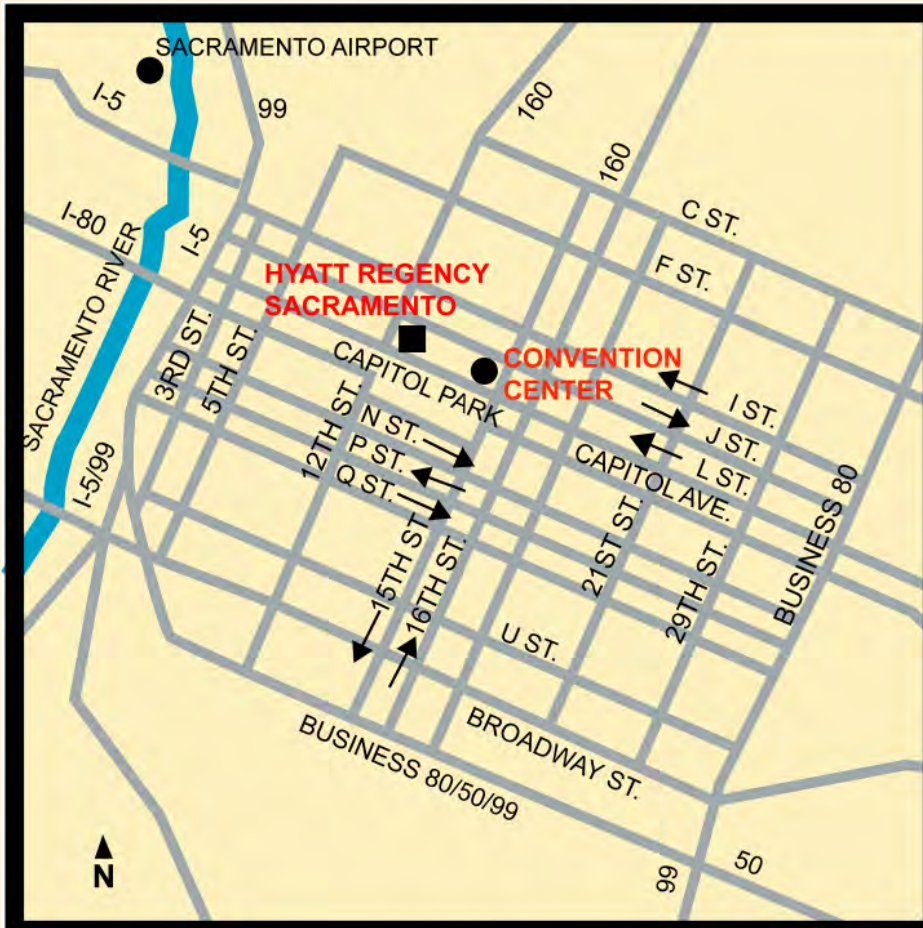
Take the "J" St. exit off I-5 South. Proceed east.

Turn right at 13th St.

Turn right at "L" St.

The hotel is at 12th St. and "L" St.

# Symposium Location



# SYMPOSIUM AT A GLANCE



## Friday, September 9, 2005

(Sacramento Convention Center)

|                 |  |                      |
|-----------------|--|----------------------|
| 6:45am-7:45am   | Yoga Class .....   | Hyatt-Golden State A |
| 7:30am-9:00am   | Breakfast .....  | Hall D/E             |
| 8:15am-8:30am   | Welcome .....  | Room 202-203         |
| 8:00am-8:00pm   | Art Exhibition .....   | Hall D/E             |
| 8:00am-8:00pm   | Poster Viewing .....   | Hall D/E             |
| 12:00pm-5:00pm  | Exhibitor Showcase .....   | Hall D/E             |
| 8:30am-11:30am  | <b>Workshop 1—Breast Cancer 101</b> .....  | Room 202-203         |
| 8:30am-9:30am   | Poster Presentations.....  | Hall E               |
| 9:30am-11:30am  | Plenary Poster Presentations .....   | Room 204             |
| 11:30am-12:00pm | Box Lunch  |                      |
| 12:00pm-2:30pm  | <b>Workshop 2—21st Century Methods for<br/>Detecting and Curing Breast Cancer</b> .....                          | Room 202-203         |
| 12:00pm-2:30pm  | <b>Workshop 3—Psychooncology and<br/>Psychoneuroimmunology: Problems, Possibilities<br/>and Pragmatics</b> ..... | Room 204             |
| 2:30pm-3:00pm   | Break.....   | Hall D/E             |
| 3:00pm-5:00pm   | <b>Workshop 4—Clinical Trial Fundamentals:<br/>Getting Started in Translational Research</b> .....               | Room 202-203         |
| 3:00pm-5:00pm   | <b>Workshop 5—Biomonitoring</b> .....  | Room 204             |
| 5:00pm-6:00pm   | CBCRP Listens .....  | Room 204             |
| 6:00pm-8:00pm   | <b>Reception</b> (Keynote Address, Workshop Roundtable,<br>and Book Signing).....                                | Hall C               |

## Saturday, September 10, 2005

(Sacramento Convention Center)

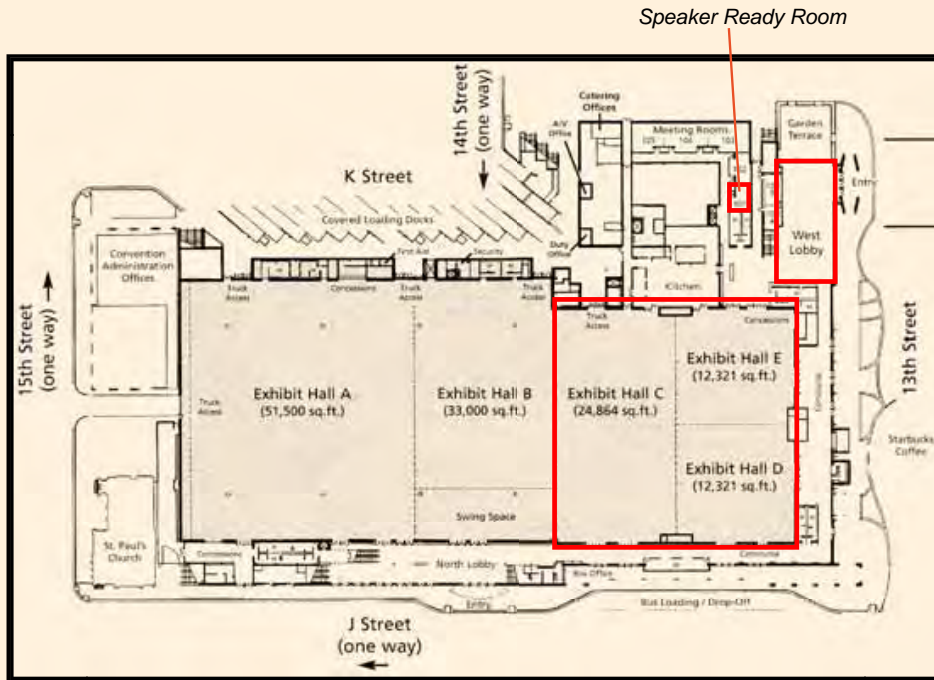
|                 |   |              |
|-----------------|---|--------------|
| 6:45am - 7:45am | Yoga Class .....  | Hyatt-Tahoe  |
| 8:00am-6:00pm   | Art Exhibition .....  | Hall D/E     |
| 8:00pm-6:00pm   | Exhibitor Showcase .....  | Hall D/E     |
| 7:30am-8:30am   | Meet the Experts Breakfast.....                                       | Hall C       |
| 8:30am-8:40am   | Welcome .....   | Room 202-204 |
| 8:40am-10:30am  | <b>Plenary Session: The Unequal Burden<br/>of Breast Cancer</b> ..... | Room 202-204 |
| 10:30am-11:00am | Break.....  | Hall D/E     |
| 11:00am-12:30pm | <b>Concurrent Breakout Sessions</b>                                   |              |
|                 | 1) Communities Conducting Research .....                              | Room 202     |
|                 | 2) New Treatment and Detection Strategies .....                       | Room 204     |
| 12:30pm-2:00pm  | <b>Lunch (Keynote Address and Awards)</b> .....                       | Hall C       |
| 2:00pm-3:30pm   | <b>Concurrent Breakout Sessions</b>                                   |              |
|                 | 3) Exploring Causes and Prevention.....                               | Room 202     |
|                 | 4) Emerging Topics in Breast Cancer Biology .....                     | Room 204     |
| 3:30pm-5:30pm   | Poster Presentation with Advocate Guides.....                         | Hall D/E     |
| 5:30pm-6:00pm   | Closing Ceremonies .....  | Hall C       |

## Sunday, September 11, 2005

(Hyatt Regency Sacramento)

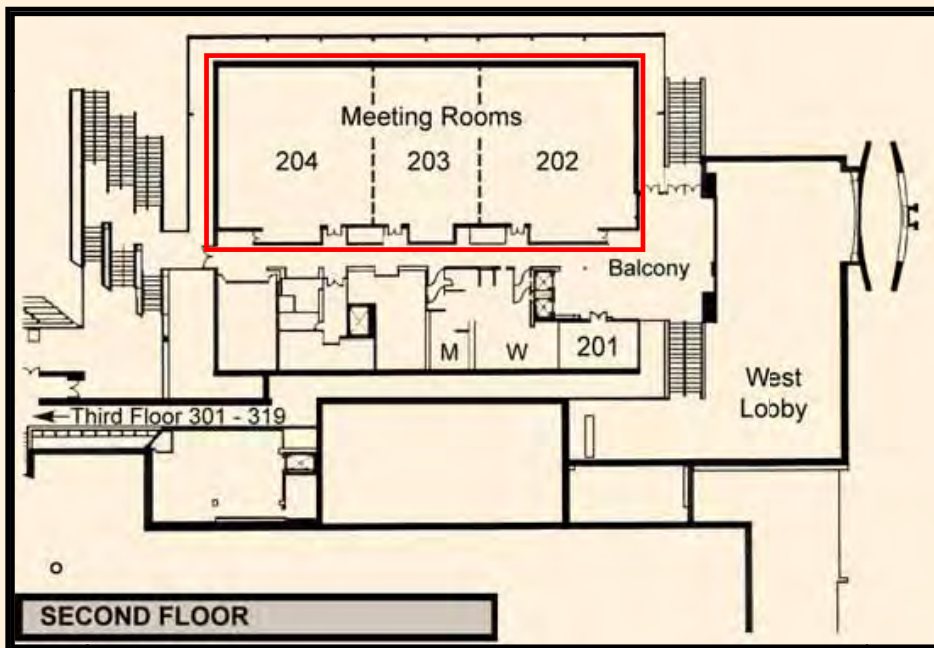
|                 |  |                   |
|-----------------|--|-------------------|
| 8:00am - 9:00am | Breakfast.....   | Pre-function Area |
| 9:00am-12:00pm  | <b>Workshop 6—Community Research Collaboration</b> .....         | Golden State AB   |
| 9:00am-12:00pm  | <b>Workshop 7—Navigating the CBCRP Application Process</b> ..... | Big Sur AB        |
| 12:00pm-1:00pm  | Lunch with Small Group Discussion .....                          | Regency EF        |

# SACRAMENTO CONVENTION CENTER FLOOR PLAN



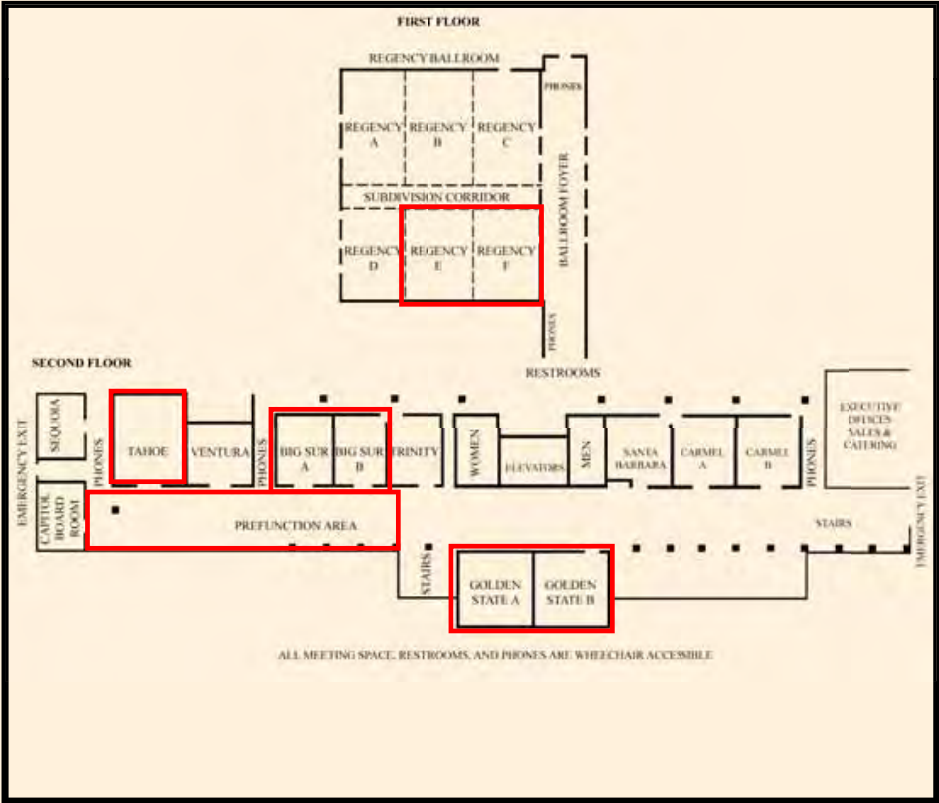
Symposium activity areas shown in red.

[ 11 ]



# HYATT REGENCY SACRAMENTO FLOOR PLAN

Symposium activity areas shown in red.



Program  
Friday, September 9, 2005

Friday, September 9, 2005



## Need to Stretch?



***The CBCRP is offering free yoga classes for all conference attendees.***

Hatha Yoga - all levels welcome

Instructor: Kellie Medrano

All classes at the Hyatt Regency Sacramento, 6:45am - 7:45am

Friday, September 9, in the Golden State A Room

Saturday, September 10, in the Tahoe Room

Students need to wear comfortable clothes to stretch in and bring a towel or mat.

**Friday, September 9, 2005**



# WELCOME and PLENARY POSTER SESSIONS

## **Welcome (8:15am–8:30am) | Rooms 202/203**

*Mhel Kavanaugh-Lynch, M.D., M.P.H., Director,  
California Breast Cancer Research Program*

## **Poster Presentations (8:30am–9:30am) | Hall E**

Poster presenters will attend their posters and field questions from attendees.  
The full list of posters can be found on pages 45–52.

## **Plenary Poster Presentations (9:30am–11:30am) | Room 204**

Selected CBCRP investigators will give oral presentations of their posters.

### **Moderator:**

*James Ford, M.D.  
Stanford University*

### **Poster Presenters:**

#### **A-02**

Breast Cancer Lymphovascular Invasion Involves Dual Bone Marrow- and Locally-Derived  
Primary Stem Cell Vasculogenesis and Secondary Angiogenic Anastomosis  
*Sanford Barsky, M.D., Ohio State University/University of California, Los Angeles*

#### **B-10**

Comprehensive Breast Screening in Women at High Inherited Risk  
*Allison Kurian, M.D., Stanford University*

#### **C-11**

Longitudinal Studies of Cognition and Adjuvant Therapy in Patients with Breast Cancer  
*Rebecca Rausch, Ph.D., University of California, Los Angeles*

#### **A-07**

Breast Cancer Prevention with Estrogen  
*Satyabrata Nandi, Ph.D., University of California, Berkeley*

#### **D-14**

Does a Peer Navigator Improve Quality of Life at Diagnosis?  
*Janine Giese-Davis, Ph.D., Stanford University*

#### **D-09**

Construction of Meaning in Metastatic Breast Cancer: A Multidisciplinary Approach  
*Jill Mitchell, M.A., University of California, Los Angeles*

# PROGRAM

## Workshop 1–Breast Cancer 101 (8:30am–11:30am) | Rooms 202/203

**Speaker:** *Ellen Mahoney, M.D., F.A.C.S.,* Community Breast Health Project

The workshop will teach the fundamentals of breast cancer basic science and clinical outcomes to symposium attendees who do not have a background in scientific research.

The history of breast cancer treatment will be presented, along with the rationale for the way the field has developed in the laboratory and at the bedside to date. Concepts of molecular oncology, genetics, epidemiology, and the scientific basis for treatment choices will be explored and explained. The workshop is designed for participants who know about the clinical aspects of breast cancer decision-making, but who may not understand the nuances of the science so far. This material is being presented at the beginning of the symposium in order to set the stage for enhanced understanding of the material being presented in subsequent sessions. The scientific basis for research funded by the CBCRP will become clearer, and the future direction of the field more understandable.

Researchers in the basic sciences who are unfamiliar with the clinical aspects of breast cancer may also find the workshop useful in demonstrating where and how principles of molecular oncology are used in medical practice.

## Workshop 2–21<sup>st</sup> Century Methods for Detecting and Curing Breast Cancer (12:00pm–2:30pm) | Rooms 202/203

Speakers will discuss the promise of nanotechnology, systems biology, and molecular imaging in the development of individualized detection, treatment, and prevention of breast cancer. They will describe the current state of the technology as well as future applications

**Moderator:** *Kim Pierce,* University of California, Los Angeles

**Speakers:**

*James Heath, Ph.D.,* California Institute of Technology

*Leroy Hood, M.D., Ph.D.,* Institute for Systems Biology

*Michael Phelps, Ph.D.,* University of California, Los Angeles

*Michele Rakoff,* Breast Friends Long Beach Memorial Medical Center

## Workshop 3–Psyco-oncology and Psychoneuroimmunology: Problems, Possibilities, and Pragmatics (12:00pm–2:30pm) | Room 204

The session will be devoted to describing how psychoimmunology and psycho-oncology relate and identifying the effective research strategies to facilitate this relationship. The panel will develop goals for this research collaboration for the future.

**Moderator:** *David Wellisch, Ph.D.,* University of California, Los Angeles

**Speakers:**

*Julie Bower, Ph.D.,* University of California, Los Angeles

*Dana H. Bovbjerg, Ph.D.,* Mount Sinai School of Medicine

*Linda Luecken, Ph.D.,* Arizona State University

Friday, September 9, 2005

# PROGRAM

## Workshop 4—Clinical Trial Fundamentals: Getting Started in Translational Research (3:00pm–5:00pm) | Rooms 202/203

The workshop will cover issues regarding barriers to clinical trials, identifying translational endpoints, development of targeted therapies, intellectual property, and the impact of HIPPA. Workshop is geared toward audience members not normally involved with clinical trials.

### Speakers:

*Mark Pegram, M.D.*, University of California, Los Angeles

*David Reese, M.D.*, University of California, Los Angeles, Translational Oncology Research Program

## Workshop 5—Biomonitoring (3:00pm–5:00pm) | Room 204

The session will describe the significance and lessons of the national biomonitoring initiative (NHANES), review case studies of how biomonitoring data has been used in looking at cancers. Attendees will participate in a discussion of where we might go with biomonitoring from both research and policy perspectives.

**Moderator:** *Joyce Lashof, M.D.*, University of California, Berkeley

### Speakers:

*Gina Solomon, M.D., M.P.H.*, Nature Defense Resource Council

*Richard Jackson, M.D., M.P.H.*, California Department of Health Services

*Sharyle Patton*, Commonweal

[ 17 ]

## CBCRP Listens (5:00pm–6:00pm) | Room 204

This open forum will give symposium participants the opportunity to speak directly to CBCRP advisory council members and director about the recent changes made to CBCRP. The session will include a formal informational section and an opportunity for participants to share thoughts with and get to know the people who are charting the future of the California Breast Cancer Research Program

We encourage comments and opinions about:

- The most urgent and unanswered questions about breast cancer
- The greatest opportunities to make an impact on the burden of breast cancer in California
- Any other issues that are important to discuss the CBCRP advisory council members and the director

Come let us know what you think.

## CBCRP LISTENS



### **Don't Miss Out!**

Attend the CBCRP Listens Session Friday 5:00–6:00pm in Room 204.

- Learn more about recent changes to grant funding and new program initiatives
- CBCRP Director and Advisory Council Members will be on hand to hear your questions and comments
- Take this chance to talk with the people charting the future of the California Breast Cancer Research Program

Friday, September 9, 2005

# PROGRAM

## Reception—*Don't Look Back, We're Not Going that Way*

(6:00pm–8:00pm) | Hall C

**Welcome:** *Christine White*, M.D., California Breast Cancer Research Program 2005-2006 advisory council chair

**Keynote Address:** *Marcia Wallace*, Author, Actress, and Breast Cancer Survivor

Ms. Wallace will be available to sign her book during the reception. Workshop presenters and artists will be available for small group discussions.

Marcia Wallace has been making people laugh on television for thirty years. Prior to her recent role as Maggie the housekeeper on *THAT'S MY BUSH*, the irreverent sitcom by the creators of *SOUTH PARK*, Marcia Wallace was best known for her Emmy award winning role as Bart's teacher, Mrs. Krabappel, on *THE SIMPSONS*, and as Carol Kester on *THE BOB NEWHART SHOW*. She reprised that role when she guest starred as MURPHY BROWN'S 66th secretary, for which she received an Emmy nomination. She reunited with Murphy as a member of her breast cancer support group, with her old boss on *GEORGE AND LEO* and recently appeared on *SEVENTH HEAVEN* and *PROVIDENCE*. Marcia's voice has also been heard on several animated series, films, and commercials.



[ 19 ]

In October of 1998, Marcia was featured in a *People Magazine* cover story on the American breast cancer epidemic along with other celebrities who have survived breast cancer. As a fifteen-year survivor, Marcia has become a high profile advocate for breast cancer awareness. In addition to sponsorships, media appearances, and her visibility as a television actress, Marcia is also a motivational speaker. She has spoken to thousands of women across the country, sharing her hilarious and moving story. She also just finished her first book. Both her speech and her book are entitled "Don't Look Back, We're Not Going That Way". The title is a quote from her larger-than-life father. Of course, he also used to say "If I don't see you again the mule is yours", so not everything he said was deep. The book is subtitled "How I Overcame a Rocky Childhood, a Nervous Breakdown, Breast Cancer, Widowhood, Fat, Fire & Menopausal Motherhood and Still Managed to Count My Lucky Chickens."

# ART EXHIBITION

## Curatorial Statement

This year's biennial exhibition weaves together a diversity of experiences that reflect the far-reaching impact of breast cancer. Each voice underscores the importance of advancing our understanding of this disease—from its causes and prevention to effective and accessible treatments. Works range from the political to the personal, from the celebration of life to the processing of profound loss. Some of the participants are seasoned, award-winning artists while others have newly discovered the transformative power of art, employing it as a vehicle for healing and growth. Each unique perspective embodies extraordinary vision and courage. These individuals represent a much larger chorus of voices, and by bringing them to the forefront of the symposium, we bring into focus the reason behind our commitment to finding better ways to prevent, treat, and cure breast cancer.

—Catherine Saiki

## Artist Biographies

### African American Breast Cancer Task Group

The African American Breast Cancer Task Group responded to an urgent need to reach African American women with early detection, screening, survivorship and community resource information. The calendar project, "Celebrate! Reflections Beyond Surviving" is a culturally competent breast cancer education project designed to encourage and inspire African American women to perform monthly breast self-exams, to have annual clinical breast exams or mammograms, and to access community services. The twenty-four month calendar features African American breast cancer survivors who are role models, leading active, productive and healthy lives because of early detection and access to community resources. The calendar also pays tribute to extraordinary women who lost their lives to the disease. Such women include Faith Fancher, a leader whose courageous fight for life extended beyond herself to include women who continue to benefit from her steadfast commitment to raising awareness, tireless advocacy, and fundraising efforts benefiting low-income women with breast cancer.

### Stefanie J. Atkinson

Stefanie Atkinson is a professional photographer with a background in motion graphic design and art direction for television and film. She is the recipient of an Emmy Award and numerous Broadcast Design Association awards. These photographs were selected from a series entitled "Bravery", a project that Stefanie embarked on to document the experiences of young women diagnosed with breast cancer. Her work conveys the strength of her subjects as they wrestle with the uncertainties of living with the disease. Young women living with the ambiguity of breast cancer face a host of daunting challenges: from deciding whether or not to become a parent or talking about their illness with young children, to coping with dramatic physical changes that may cut to the core of their sexuality and self-image, including mastectomy, early menopause, and baldness. Common threads run through their stories: threads of bravery, hope, strength, faith, and determination.



"Tattoo", Stefanie J. Atkinson

Friday, September 9, 2005

# ART EXHIBITION

## **Carina Baumann**

The inspiration behind Carina Baumann's installation piece is a desire to bring awareness to the indiscriminate impact of breast cancer. Working with a projected image of invasive ductal carcinoma within a darkened room, Carina ensures that when the viewer enters the space he/she becomes implicated in the piece, casting his or her shadow on the projected wall while simultaneously the image writes itself on the viewer's individual body. The lacy filigree pattern of hand-knitted nylon monofilament string, a material known to contain cancer-causing substances, hangs from the ceiling, casting its shadow on the projected image of cells. The material is constructed to hold up to 54.6 tons, a metaphor Carina uses in attempting to hold the weight and sorrow of those impacted by the disease.

## **Breast Art, California Breast Cancer Research Program and contributing artists**

Unique pieces of wearable "Breast Art" are on display, and worn by survivors attending the symposium. The artwork, worn over places of trauma, represents a symbol of courage and life. By creating and wearing these works of art, new doors of self-expression are opened and affirmation is given to the artist. Frankie Hansberry, a participating artist this year, created "Hand and Heart". The work of art was created in the shape of a hand, painstakingly adorned with intricate beadwork, to express self-nurturing and vulnerability. Hansberry mused that while the sculpture was an exercise in patience (it is meticulously covered with a design using brilliant, indigo-blue beads), it was a piece that evolved on its own.

## **Maria Carillo**

"Give me Strength" depicts Tara, the Hindu goddess of compassion, whose love heals at the source of disease, bringing healing and strength. She sits on a lotus plant, which represents the soul rising from the confusion of matter into the clarity of enlightenment. The egg represents her new life after her diagnosis eight years ago with breast cancer and bony metastasis. The skull reminds her that death is never far away. Expressing the story of her journey with breast cancer is both life-affirming and empowering. Maria uses her art-making to help her accept this illness as her teacher. Her work also serves as a catalyst for transformation, for herself as well as for those she loves. Mythic symbols illustrate for her the connection she believes we all share in our journey with cancer and the inevitable transformations that accompany this journey.

[ 21 ]

## **Ilene Danse**

"Treatment" is one in a series of sculptures commemorating the journey of Ilene Danse from a diagnosis of breast cancer to the present. While undergoing the physical challenges of intensive chemotherapy and radiation, what she found remarkable was the extraordinary people she met along the way. "My brilliant oncologist had the ability to listen and be very supportive; the other patients in the 'Tuesday Morning Chemo Club,' each unique and larger than life, kept each other laughing, exchanging recipes, and restaurant reviews."

She creates this piece with an awareness of the toll that it took on her body, the gift of health, and the grace of human connection she discovered along the way.

## **Amelia Davis**

Amelia Davis is a professional photographer based in San Francisco. Her work has been featured in magazines, textbooks, and numerous solo and group exhibitions. *The First Look* is a bold collection of portraits of, and essays by, women living postoperatively with breast cancer. It has won two awards since it was published in 2000. Davis embarked upon the project in honor of her mother's journey through breast cancer treatment. The photographs, capturing the resilience of the human spirit, empower women facing surgery with a direct and honest look at life after diagnosis.

# ART EXHIBITION

## Eric Embry

Eric had the honor of meeting Natalie soon after he moved out to San Francisco in 2003. It was nine months later that Natalie was diagnosed with breast cancer. After completing her treatments, she asked Eric to take photographic portraits of her. She wanted to document this chapter in her life and to confront the dramatic change in her appearance and the impact that it had on her self-image. These images capture both the vulnerability and triumph that have accompanied her path through breast cancer. Reflecting on his own involvement in the process, Eric marvels at the courage, grace, and balance that Natalie has embodied in the face of this disease.

## Marilee Ford

When Marilee Ford was diagnosed with breast cancer, she was in the midst of obtaining her Masters degree at JFK University. The focus of the program was the transformative power of art. Externalizing her experiences through creative means (painting, sculpting, and writing among them) enabled her to heal from the trauma. As a Hospice Nurse, she also offers classes to health care personnel who wish to explore alternative means of healing. "New Body" reflects the post-operative changes that her body has undergone, "I am now a member of the one-breasted warrior clan. There is beauty there, and in that beauty can be found healing."

## Sylvia Colette Gehres

Sylvia Colette Gehres started her first life-drawing class two years before breast cancer diagnosis. Despite undergoing a series of treatments—a lumpectomy followed shortly by a mastectomy, then chemotherapy and radiation—she remained committed to creating her art. It was during support meetings at The Wellness Community that she realized art was her true passion. She is grateful that these years have provided her with the needed time to create these works of art. She acknowledges that, in a strange way, cancer was the catalyst for the gift of art in her life. Gehres has since exhibited nationally, as well as internationally, participating in shows as far reaching as Hong Kong.

## Susan Gray

The name of the work, "Raging Light", is taken from the Dylan Thomas poem that ends, "Do not go gentle into that goodnight . . . Rage, rage against the dying of the light." The lightning shapes in the center panel represent both the raging path of breast cancer through so many innocent lives, as well as the healing energy that flows through and around us as we struggle with this disease. The names on the quilts represent individuals who have fought valiantly to keep cancer from extinguishing the light of their spirits. The central image of the quilt is a large, stylized archway supported by pillars of name squares. The "Pillars of Strength" breast cancer quilt is a joint project commissioned by the San Ramon chapter of Soroptomist International. It was designed and pieced by Gray and machine-quilted by Janna Bailey, proprietor of The Quilting Company in Walnut Creek, California. The name squares were signed by participants in the Soroptomist's 2003 "Strides Towards a Cure," a breast cancer fundraiser. The quilt was completed a year later in June 2004 and celebrates the strength and spirit of all the survivors, caregivers, and those lost to breast cancer.



*"Pillars of Strength", Susan Gray*



## ART EXHIBITION

### Judy Hiramoto

Judy Hiramoto is a conceptual and interdisciplinary artist who utilizes a range of media including digital art, installations, and video. Hiramoto began the nuclear culture series in 1995 to commemorate fifty years of the nuclear age. Drawing parallels between radiation exposure and increased breast cancer risk, Hiramoto brings our attention to the fact that after dropping the first atomic bombs on Japan during World War II, the United States subsequently began an undeclared war on its own citizens when it relentlessly tested bombs in Nevada, spreading radioactive fallout over its own people. Hiramoto has participated in over two hundred exhibitions in the United States, Canada, Japan, Taiwan, and France.

### Heidi Hornberger

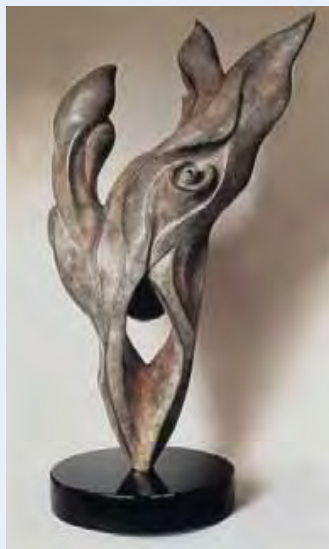
Heidi Hornberger was diagnosed with breast cancer on Thanksgiving of 2003. An artist by profession, she was inspired to explore the self-transformation that followed the terror of her diagnosis. "Joy" documents a space of self discovery: "... I rest in the ashes of profound loss and wait. I feel as though a fire has burned a hole through my very core, leaving me empty inside. Finally, from the ashes that have long since turned to cold, black stone, a seed sprouts and begins to grow. Delicate and fragile, it holds a distant memory of something I have lost and feared was dead. Its gift is the rebirth of joy in my life, returned to me at long last."

### Nancy Lane

After being diagnosed with breast cancer in 2002, an important part of Nancy Lane's healing process was making ceramic breast boxes and rattles. It was a needed bridge between cancer and her creative self, each container serving as a prayer or affirmation. Nancy has worked to share this experience with others and has made the opportunity available to other women through a grant from the Clay and Glass Arts Foundation. Nancy is currently working with groups of women through Highland Hospital and the Women's Cancer Resource Center.

### Arlene Linder

In May of 1994, Arlene Linder discovered that her daughter, Michelle, had breast cancer. Linder's family was informed that it was moving so quickly that Michelle would be lucky to live six months. What followed was a year of agonizing treatments, or as Michelle described it, "First they practically poisoned me to death and burnt out my ovaries, then chopped off my breast and then they wanted to nuke me with radiation." While Michelle endured the excruciating treatments, Linder survived by drawing her daughter during the different stages of treatment. Linder writes, "The world is out there, and she is going to live every minute to the max." Each work was drawn in a sketchpad while Linder sat by her daughter's bedside at UC Medical Center. Her daughter's courage has been the greatest influence on her artwork. Michelle has just completed writing "Surviving the Cure", a movie script that documents her experience.



*"Joy", Heidi Hornberger*

## ART EXHIBITION

### Michelle Mansour

Michelle Mansour's work is an investigation of the interior world of the body. Fluctuating between the miniscule and the grandiose, she looks for wonder in the unknown, the invisible and the uncontrollable. Her interest in this body of work stems in part from her mother's diagnosis with cancer, and is further informed by growing up in a family of science and health care practitioners. The repetitive process of painting and manipulating physical materials allows her to feel somewhat empowered over life situations that are ultimately beyond her control. While the subject matter suggests the seemingly inevitable possibility of illness and disease, the paintings serve as meditations on the exquisite and delicate balance of the natural world.



*"A Narrow Passage", Michelle Mansour*

### Kit Morris

To Kit Morris, photography is a form of storytelling. With twenty-five years of experience in commercial photography, she considers her recent involvement in photographing people who have survived challenging health battles as the most rewarding. With her own diagnosis of breast cancer in 1996, she used the visual therapy of photography to arrive at an understanding of the disease. The portrait of Denise is from "Beauty Bared". Denise is pictured in front of paintings that she created while undergoing reconstructive surgery. "Real/Unreal" is a portrait of a woman wearing a prosthetic breast. Kit Morris works to confront the stigma surrounding breast cancer treatment, as well as to help newly diagnosed women navigate this overwhelming process. Central to her work is the vibrancy and courage of women who have undergone treatment for breast cancer. Her international clientele included Roche, Hewlett Packard and Visa, as well as the Addy Award winning work for Levi Strauss & Co. Numerous national publications have featured her editorial photography, including *Interior Design*, *Metropolitan Home*, *Elle*, and *The New Yorker*.



*"Real-Unreal", Kit Morris*

### Art Myers

In addition to being a fine art photographer, Art Myers is a physician specializing in preventative medicine and public health. Although largely self-taught in photography, he has studied in workshops with Annie Liebovitz, Arnold Newman, Larry Fink, Sally Mann, and Joyce Tenneson, among others. An award winning and nationally exhibiting artist, Myers draws inspiration from the loss of his sister to breast cancer as well as from his wife's subsequent diagnosis with the disease. This series addresses the resilience of a woman's beauty, strength, and femaleness in all of its complexity, even after the transforming experience of breast cancer.

# ART EXHIBITION

## Kristin Otwell

"Healing Doll" was created while Kristin was undergoing chemotherapy and radiation treatments for early-stage breast cancer. It is fashioned in black velvet to reference the full force with which she was hit with every poisoning chemotherapy infusion. After the symptoms of the chemotherapy would subside, she noted that she would be filled with feelings of growth, insight, and a new fire for living.

## Josie Rodriguez

Josie holds tightly to her heart the intrinsic healing power involved in the creation of art. "Nancy's Altar" was made after the loss of a close friend to breast cancer. It is a memorial that reflects her love for her, incorporating the flowers that Nancy loved, the Milagros and prayer card from her memorial. "Prayer Bowl" is made with handmade paper, painted gold, and is inscribed with the names of loved ones and her accompanying prayers for them. These works reflect her own healing and, she hopes, the healing of others.



*"Prayer Bowl", Josie Rodriguez*

## Lauren Scime

Lauren Scime makes paintings that explore issues of the human condition, abject hierarchical power, and the plasticity of contemporary life. Greatly affected by the loss of her mother to cancer at the age of 19, her work investigates the line between the self as a subject, capable of illness, pain, and loss, and the self as an object of medical scrutiny. She explores this schism by juxtaposing figurative and symbolic elements. Lauren has shown extensively in San Francisco and Western New York, and is included in the permanent collection at the Griffis Sculpture Park in Ellicottville, NY. She received her BFA in painting from the State University of New York at Buffalo in 2002, and is currently pursuing her MFA at the San Francisco Art Institute.

[ 25 ]

## Henrietta Sparkman

"Recall" is one sculpture in a series of twenty works that Henrietta created to give physical form to the immaterial notions of self, fear, and experience as they relate to breast cancer. The title is taken from the recall notice she received indicating that she would need to return to the radiologist for further testing. Her artwork is a medium she relies upon to express what words fail to capture. They are reminders to listen to the regular rhythm of life as well as the lessons that each new day offers amidst the ever-present awareness of the possibility of death.

## Astrid Van Den Boogaerde

Astrid is interested in exploring the culturally prevailing metaphor of war as it relates to her experience of breast cancer and the recommended medical treatments for the disease. After undergoing a mastectomy she began exploring her newly altered body using plaster casts, photography, and clay. In an attempt to further her understanding of the widespread acceptance of the need for war and war-like attitudes, she turned to Sun Tzu's "The Art of War", a 2000-year-old philosophical examination of conflict, invincibility, and victory without battle. It is Astrid's belief that her cancer was the result of an already embattled body and mind. Looking for insights that might help in making appropriate decisions concerning her treatments, Astrid created "Doing Battle and the Art of War" in which she rewrites quotes from the ancient text and places them around a photograph of her clay-molded torso.

## **WE NEED YOUR FEEDBACK!**

**Don't Forget to Return Your Evaluation Form**

**Bring it by the CBCRP booth and enter in a raffle or  
drop it in an evaluation return box in the meeting  
rooms**

**Raffle on Saturday!\* Bring your evaluation form to the  
CBCRP booth to enter!**

**Help us improve for the future**

**\*You don't have to be present to win.**

# EXHIBITOR SHOWCASE

Nonprofit groups from around California will share practical knowledge about what you can do to confront breast cancer in your community.

AMERICAN CANCER SOCIETY

BREAST CANCER ACTION

BREAST CANCER ALLIANCE OF CALIFORNIA

BREAST CANCER FUND

BREAST HEALTH ACCESS FOR WOMEN WITH DISABILITIES

CALIFORNIA BLACK HEALTH NETWORK

CALIFORNIA BREAST CANCER RESEARCH PROGRAM

CALIFORNIA CANCER REGISTRY

CALIFORNIA HEALTH COLLABORATIVE

CHARLOTTE MAXWELL COMPLEMENTARY CLINIC

COMMUNITY BREAST HEALTH PROJECT

GUAM COMMUNICATIONS NETWORK, INC.

HEALTH EDUCATION COUNCIL/CANCER DETECTION PROGRAMS

HOAG CANCER CENTER BREAST CANCER PROGRAM

MARIN BREAST CANCER WATCH

NATIONAL LYMPHEDEMA NETWORK

NORTHERN CALIFORNIA CANCER CENTER

NCI CANCER INFORMATION SERVICES

PARTNERED FOR PROGRESS

SISTERS NETWORK SF CHAPTER

THE SISTER STUDY, CONDUCTED BY NIEHS

UC DAVIS HEALTH SCIENCES LIBRARIES

UCSF BREAST SPORE ADVOCACY CORE PROGRAM

UNIVERSITYWIDE AIDS RESEARCH PROGRAM

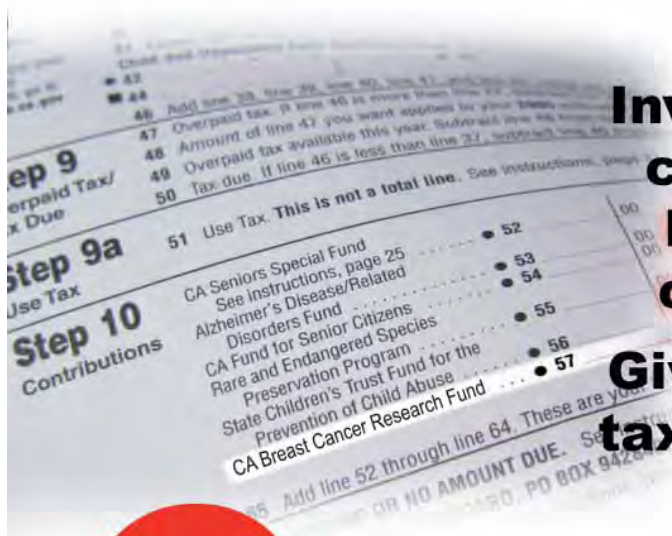
USDA WESTERN HUMAN NUTRITION RESEARCH CENTER

Y-ME NORTHERN CALIFORNIA AFFILIATE

YWCA OF SACRAMENTO ENCOREPLUS

WOMEN'S CANCER RESOURCE CENTER, OAKLAND

[ 27 ]



**Invest in a  
cure for  
breast  
cancer**

**Give to CA  
tax line 57.**



**California Breast Cancer Research Program**  
 University of California, Office of the President  
 888 313-BCRP (2277)

[ 28 ]

Program  
Saturday, September 10, 2005



Saturday, September 10, 2005

# MEET THE EXPERTS BREAKFAST SESSION

7:30am–8:30am | Hall C

Symposium attendees will be able to join highly interactive discussions about breast cancer topics that have implications for performing research and living with the disease. Informal small group discussions will be led by experts in the field.

## **Dorothy (Dee) Bainton, M.D.**

### **Academic Careers for New Investigators**

Dee Bainton was the Vice Chancellor for Academic Affairs of the University of California, San Francisco, from 1994–2004. In her post, she was responsible for the planning and review of all teaching programs at UCSF. She oversaw the Registrar and Student Academic Affairs and Academic Personnel academic units, among others. She will lead a discussion of how to make the most of academic career opportunities.

## **Beverley Burns, M.S., L.Ac.**

### **Approaches for Researching Alternative Medicines**

Beverley Burns is a practitioner of TCM (traditional Chinese medicine) and co-founded the Charlotte Maxwell Complementary Clinic, which provides services to low income women. She is also part of a multidisciplinary team performing breast cancer research at the University of California, San Francisco, Cancer Center. She will lead a discussion about alternative medicines and how they can be realistically analyzed for effectiveness.

## **Robert Cardiff, M.D., Ph.D.**

### **Developing Breast Cancer Models for Research**

Robert Cardiff is a professor of Anatomic Pathology at the University of California, Davis, School of Medicine. He is a trained pathologist, formerly headed the Center for Medical Informatics and researches the pathology of genetically engineered mice. He will lead a discussion on how to develop physiologically relevant models of human breast cancer.

## **Michael Clarke, M.D.**

### **The Role of Stem Cells in Breast Cancer**

Michael Clarke is a professor at the University of Michigan and a pioneer in breast cancer stem cell research. The identification of breast cancer stem cells has opened up new insights into complexities and natural history of breast tumors. He will lead a discussion on the roles than stem cells may play in breast cancer development and progression.

## **Laurence Fitzgerald, Ph.D.**

### **Grant Opportunities at the CBCRP**

Laurence Fitzgerald is the manager of Core Funding for the CBCRP. He will lead a discussion and answer questions regarding grant opportunities at the CBCRP, what we are looking for with our various award types, our peer review process, and what goes into a funding decision.

**Saturday, September 10, 2005**



# MEET THE EXPERTS BREAKFAST SESSION

## **Jim Ford, M.D.**

### **Genetic Testing and Risk Assessment for Breast Cancer**

James Ford is a medical oncologist and director of the Stanford Cancer Genetics Clinic. He is also an active researcher interested in developing treatments that target mutated BRCA1 and 2 genes. He and one of Stanford's genetic counselors will lead a discussion on the tools, opportunities, and pitfalls in genetic testing for determining breast cancer risk, and new advances for prevention and early detection of breast cancer in high-risk women.

## **Marion (Mhel) Kavanaugh-Lynch, M.D., M.P.H.**

### **CBCRP Future Directions**

Mhel Kavanaugh-Lynch has served as director of the CBCRP for a decade. She will be available to discuss the current goals and future directions of the CBCRP, or any other issues related to the program.

## **Michele Rakoff**

### **Developing Breast Cancer Support Groups**

Michele Rakoff, a breast cancer survivor and patient advocate, is the Director of the Breast Friends Program at Long Beach Memorial Medical Center. Breast Friends is a peer-support mentoring program for newly diagnosed breast cancer patients. Ms. Rakoff will lead a discussion on how to form an effective breast cancer support network.

[ 3 ]

## **Sandy Walsh**

### **Advocacy and Breast Cancer**

Sandy Walsh is a 21-year breast cancer survivor, President of California Breast Cancer Organizations (CABCO), and the co-founder of Y-Me, Northern California. She is an active advocate who, through her organizations, has provided breast cancer education and support to women across California. Ms. Walsh will lead a discussion on how advocacy can inform research, impact service delivery, and turn issues of concern to communities into political action.

## **Dee West, Ph.D.**

### **Utilizing the California Cancer Registry**

Dee West is the Chief Scientific Officer of the Northern California Cancer Center. His research interests include understanding patterns of cancer incidence and survival using cancer registry data and improving cancer registry surveillance methods. Dr. West will lead discussion on how cancer registries can best be utilized to make the greatest impact on understanding breast cancer.

# WELCOME

8:30am–8:40am | Room 202-204

## **Mistress of Ceremonies:**

**Holly J. Mitchell**

*CEO, Crystal Stairs, Inc.*

## **Speakers**

**Mhel Kavanaugh-Lynch, M.D., M.P.H.**

*Director, California Breast Cancer Research Program*

**Debra Oto-Kent, M.P.H.**

*Chair, Breast Cancer Research Council (2003–2005)*

*Founder and Executive Director, Health Education Council*

# WELCOME



**Holly J. Mitchell, CEO**

*Crystal Stairs, Inc.*

Holly Mitchell has been the mistress of ceremonies at every state-wide symposium that the CBCRP has held. Her enthusiastic contributions to the symposium nurtured the tenor and heart of the symposium. In addition to her duties at Crystal Stairs, Ms. Mitchell is active in other child care and human services related organizations. These include her roles on the Public Policy Committees of the Los Angeles County Child Care Alliance and the California Resource and Referral Network, the Welfare Reauthorization Task Force of the National Association of Child Care Resource & Referral Agencies (NACCRA), the Advisory Board and Children's Health Sub-committee of the State Department of Health Services' California Health Information Survey (CHIS), and as a Board Member for the Insure the

Uninsured Project (ITUP). Ms. Mitchell has served on numerous boards and committees, including the Governor's Women's Health Advisory Council and California Breast Cancer Research Council.

Ms. Mitchell's public advocacy career began in the office of State Senator Diane Watson, where she advised members of the legislature on issues related to quality child care as the senior policy analyst for the Senate Health and Human Services Committee. Before joining Crystal Stairs, Ms. Mitchell was a Legislative Advocate for the Western Center on Law and Poverty where she coordinated with other advocates on health policy issues affecting low-income communities. Prior to this, she was the Executive Director of the California Black Women's Health Project where she interfaced with community-based agencies, policy makers, government agencies, grant makers, and health care professionals on current trends and data on the status of women's health.

A graduate of the University of California, Riverside, and the Coro Foundation's Public Affairs Fellowship, Ms. Mitchell is the proud mother of five-year-old Ryan.

# PLENARY SESSION—THE UNEQUAL BURDEN OF BREAST CANCER

8:40am–10:30am | Room 202-204

It is frequently observed that breast cancer affects different groups of people to different degrees. The panel will consider the wide-ranging forces that contribute to disparities. They will describe the status of breast cancer in different populations and explore the contributions of biology, access to services, and environment to inequities in the disease. They will also propose tangible ways that researchers, advocates, clinicians, and members of the general public can address the imbalance. Audience participation in the discussion will be strongly encouraged.

## **Moderator:**

**Robert Hiatt, M.D., Ph.D.**, Director of Population Sciences and Deputy Director, University of California, San Francisco, Comprehensive Cancer Center

## **Panelists:**

**William Wright, Ph.D.**, Chief of the California Cancer Registry, California Department of Health Services

**Lovell Jones, Ph.D.**, Director of the Congressionally Mandated Center for Research on Minority Health, Professor, University of Texas MD Anderson

**Sandra Millon Underwood, RN, Ph.D., FAAN**, Professor, University of Wisconsin Milwaukee College of Nursing

**Rachel Morello-Frosch, Ph.D.**, Assistant Professor, Center for Environmental Studies and Department of Community Health, School of Medicine, Brown University

**Debra Oto-Kent, M.P.H.**, Founder and Executive Director of the Health Education Council

## PLENARY SESSION SPEAKERS



**Robert Hiatt, M.D., Ph.D.**

Dr. Robert A. Hiatt is the Director of Population Science and Deputy Director of the UCSF Comprehensive Cancer Center. He is a Professor of Epidemiology and Biostatistics at UCSF and also a Senior Scientist for the national Kaiser Permanente Medical Care Program in Oakland.

From 1998 to early 2003 he was the Deputy Director of the Division of Cancer Control and Population Sciences at the National Cancer Institute (NCI), where he oversaw cancer research in epidemiology and genetics, surveillance, and health services research. Before that he was the Director of Prevention Sciences at the Northern California Cancer Center and also Assistant Director for Epidemiology at the Division of Research, Kaiser Permanente Medical Care Program in Northern California.

He was trained in medicine at the University of Michigan and in epidemiology at the University of California at Berkeley. He is Board Certified in Preventive Medicine and, until taking his NCI position practiced general internal medicine. After an early career in international health and tropical disease research, his research interests have included cancer epidemiology, especially breast cancer, cancer prevention and screening. He is a past president of the American College of Epidemiology and is now President of the American Society for Preventive Oncology. His central focus at UCSF will be building a strong, interdisciplinary program in cancer population sciences that will include epidemiology and genetics, behavior and health services research, surveillance, and survivorship research.

[ 7 ]

William Wright, Ph.D.

Dr. Wright is the Chief of the Cancer Surveillance Section (CSS) of the California Department of Health Services, and is noted for his extensive experience in surveillance research with over ten years of experience in cancer surveillance. Over his career, Dr. Wright has also conducted research projects for the Centers for Disease Control (CDC), National Cancer Institute (NCI) and National Institutes of Health (NIH), among others, and authored or co-authored findings on cancer in more than 40 publications. For the past six years, Dr. Wright has served as Chief of the California Cancer Registry (CCR), providing broad oversight and ensuring all project activities are integrated within the ongoing activities of CCR. Ongoing cancer research projects under his management include the National Cancer Prevention and Control Program (CDC), Cancer Surveillance Research with Data Enhancement and Utilization (CDC), Surveillance Epidemiology and End Results Program (NCI) and Breast and Other Cancers in California Teachers Cohort (NCI). Dr. Wright holds B.A., M.S., and Ph.D. degrees in Psychology.

## PLENARY SESSION SPEAKERS



**Lovell Jones, Ph.D.**

Dr. Lovell Allan Jones received his doctorate in 1977 in the field of zoology with an emphasis in endocrinology and tumor biology from the University of California, Berkeley. After receiving his doctorate, Dr. Jones was a NIH Postdoctoral Fellow in the Reproductive Endocrinology Center at the University of California, San Francisco (UCSF). Before joining the Department of Gynecologic Oncology at University of Texas M. D. Anderson Cancer Center (UTMDACC) in 1980, Dr. Jones was an Instructor in the Departments of Physiology and Obstetrics, Gynecology & Reproductive Sciences at UCSF.

Dr. Jones is presently a Professor in the Departments of Gynecologic Oncology as well as the Department of Biochemistry and Molecular Biology at the University of Texas M.D.

Anderson Cancer Center (UTMDACC). Since 1988, he has served as Director of the Experimental Gynecology/Endocrinology. In January 2000, he was named as the first Director of the Congressionally Mandated Center for Research on Minority Health. Dr. Jones has published over 100 scientific articles ranging from hormonal carcinogenesis to health policy.

As a scientist, Dr. Jones has done extensive research into the relationship between hormones, diet and endocrine responsive tumors. His present work involves determining the mechanism by which natural and environmental estrogenic agents may initiate cancers in hormonally responsive tissue.

Dr. Jones has devoted extensive personal and professional time to the subject of minorities and cancer. He has edited one of the few comprehensive textbooks on this subject entitled "Minorities & Cancer." Dr. Jones has either chaired or co-chaired a number of major events regarding the underserved and cancers, including the Biennial Symposium Series on Minorities, the Medically Underserved & Cancer, as well as the ACS South Central U.S. Regional Hearings on Cancer and the Poor.



**Sandra Millon Underwood, RN, Ph.D., FAAN**

Over the past ten years Dr. Underwood has committed herself to developing strategies and interventions aimed toward improving the access of minority, economically disadvantaged, and medically underserved populations to state-of-the-art breast cancer detection and control programs.

Her educational background—a bachelors degree in nursing (Loyola University, Chicago, IL), a master's degree in nursing (Loyola University, Chicago, IL) and a doctorate in education and social policy (Northwestern University, Evanston, IL)—helped launch her into an academic forum where she was able to actualize a career of research, teaching, and advocacy.

As a professor at the University of Wisconsin she has facilitated the development of courses that aim to enhance student knowledge relative to cancer detection and control and the care of culturally diverse and vulnerable populations. She was the founding director of the House of Peace Community Nursing Center. In this capacity she developed educational and research opportunities for faculty and students within high-risk community settings. In addition, most recently she has been involved in the development of a series of initiatives aimed toward reducing disparities in breast cancer detection and control among African American women and in the development of a national research institute for nurse scientists aimed toward expanding and strengthening nursing research focused on breast cancer in African American women.

**Saturday, September 10, 2005**

## PLENARY SESSION SPEAKERS

### **Rachel Morello-Frosch, Ph.D.**

Rachel Morello-Frosch is an assistant professor at the Department of Community Health, School of Medicine and the Center for Environmental Studies at Brown University. Rachel completed her bachelor's degree in development economics, a master of public health degree in epidemiology and biostatistics, and her Ph.D. in environmental health sciences at the University of California, Berkeley. She teaches methods courses on environmental health, risk assessment, and policy, epidemiology, and a seminar on the science and political economy of environmental health and justice.

Rachel's research examines race and class determinants of the distribution of health risks associated with air pollution among diverse communities in the United States. Her current work focuses on comparative risk assessment and environmental justice, developing models for community-based environmental health research, science and environmental health policy-making, children's environmental health, and the intersection between economic restructuring and community environmental health. Rachel is currently working on a research collaborative with academic colleagues in Southern California, and Communities for a Better Environment on "Air Pollution, Toxics, and Environmental Justice." She is also collaborating with Silent Spring Institute in Massachusetts on a community-based household exposure study on endocrine-disrupting chemicals funded by the National Institute of Environmental Health Sciences. Rachel is also a member of Breast Cancer Action's scientific advisory board.

[ 9 ]



### **Debra Oto-Kent, M.P.H.**

Debra Oto-Kent is the founder and executive director of the Health Education Council, a private, nonprofit community agency based in Sacramento, California. The Health Education Council conducts health promotion programs for underserved communities. Regional, state, and national programs focus on tobacco use prevention, nutrition, diabetes, breast cancer, and physical activity. Since its inception in 1990, the Council has grown from three to 25 employees conducting nationally recognized programs.

Debra received her masters of public health degree from University of California, Los Angeles, School of Public Health in 1980. She has since devoted her career to planning, implementing, and evaluating health promotion programs for

low income, underserved communities. She has presented numerous papers and presentations and serves on a variety of committees and as a reviewer of grant applications.

Debra lives with her husband and three sons. She climbed to the summit of Mount Fuji, Japan, in 2000 as a member of the Climb Against the Odds Breast Cancer Survivors Team. She enjoys spending time with her family.

# CONCURRENT BREAKOUT SESSIONS

11:00am–12:30pm

## Session 1—Communities Conducting Research | Room 202

The CBCRP pioneered Community Research Collaboration (CRC) Awards in 1997. These awards encouraged community groups to partner with academically trained researchers to address the community impact of breast cancer, including breast cancer issues most important to diverse communities living in California. This session will examine three studies that apply the community participatory research model. Teams involved in optimizing participation in clinical trials and providing psychosocial support to breast cancer survivors will be highlighted.

### **Moderators:**

Shiraz Mishra, M.D., Ph.D., University of Maryland  
Barbara Balaban, West Islip Breast Cancer Coalition

### **Speakers:**

*Efficacy of a Community Program in Increasing Access to STAR*

Kathleen Brown, M.D., Association of Black Women Physicians  
Patricia Ganz, M.D., University of California, Los Angeles

*Does a Peer Navigator Improve Quality of Life at Diagnosis?*

Janine Giese-Davis, Ph.D., Stanford University  
Caroline Bliss-Isberg, Ph.D., WomenCARE

*Decision Support in Rural Underserved North Coast Counties*

Jeff Belkora, Ph.D., University of California, San Francisco  
Sara O'Donnell, Mendocino Cancer Resource Center  
Julie Ohnemus, Humboldt Community Breast Health Project

## Session 2—New Treatment and Detection Strategies | Room 204

A significant challenge in breast cancer today is finding the cancer early, ideally before it becomes aggressive. In order to do this we will need to move away from the current mammography technologies to ones that are more sensitive and specific. Once a breast cancer is found, we still need to determine the best way to manage the disease for the best possible outcome. This session will explore alternatives to current technologies and treatment protocols for improving breast cancer detection and prognosis.

### **Moderators:**

Doug Yee, M.D., University of Minnesota  
Sandra Stanford, Alamo Breast Cancer Foundation

### **Speakers:**

*CT Scanning – an Alternative to Mammography*

Thomas Nelson, Ph.D., University of California, San Diego

*Blood Test for Breast Cancer using DNA Markers*

Dave Hoon, Ph.D., John Wayne Cancer Institute

*Effect of Timing of Breast Cancer Surgery on Prognosis*

Hillary Klonoff-Cohen, Ph.D., University of California, San Diego

**Saturday, September 10, 2005**



Did you know....

**The CBCRP has a special place on our website just for your comments, suggestions, and feedback?**

**It's called CBCRP Listens!**

**Follow the link on the home page and let us know what you think!**

**[www.cbcrp.org](http://www.cbcrp.org)**

**The staff and advisory council carefully review all comments.**

**We appreciate your input!**

[ 11 ]

# KEYNOTE LUNCHEON

12:30pm–2:00pm | Hall C

## **Mistress of Ceremonies:**

**Holly J. Mitchell**, CEO Crystal Stairs, Inc.

## **Achievement Award:**

**Susan M. Shinagawa**, Former Advisory Council Chair (1995 - 1996)

Presented by Charles L. Gruder, Ph.D., Executive Director, Special Research Programs, University of California, Office of the President

## **Cornelius L. Hopper Poster Award Presentations:**

**Cornelius Hopper, M.D.**, Vice President, Emeritus, University of California, Office of the President, Office of Health Affairs

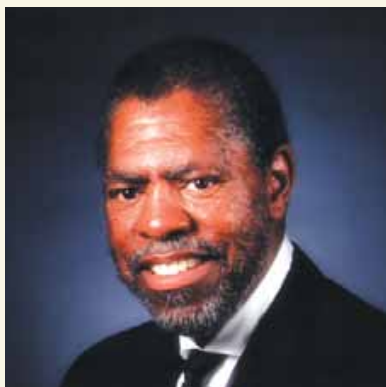
**Mhel Kavanaugh-Lynch, M.D., M.P.H.**, Director, California Breast Cancer Research Program

## **Keynote Address:**

*Unlocking the Mystery of Breast Cancer through Innovative Partnerships and Interdisciplinary Research*

**Kenneth Olden, Ph.D., Sc.D., L.H.D.**, Director Emeritus, National Institute of Environmental Health Sciences and the National Toxicology Program

## KEYNOTE LUNCHEON



### **Kenneth Olden, Ph.D., Sc.D., L.H.D.,**

Dr. Kenneth Olden is Section Chief of the Laboratory of Molecular Carcinogenesis, Metastasis Group, National Institute of Environmental Health Sciences (NIEHS). He was named the third director of the NIEHS and the second director of the National Toxicology Program (NTP) on June 18, 1991. Dr. Olden held those positions until April 2005.

Under Dr. Olden's guidance the NIEHS in partnership with the National Cancer Institute created four research centers to investigate potential environmental factors that could lead to breast cancer. He established the Breast Cancer and the Environment Research Centers (BCERCs) by involving interdisciplinary researchers and the community in shaping their directions.

Dr. Olden is a cell biologist and biochemist by training, and has been active in cancer research for almost three decades. He was director of the Howard University Cancer Center and professor and chairman of the Department of Oncology at Howard University Medical School (1985-1991), Washington, D.C., before coming to NIEHS. He joined Howard in 1979 as Associate Director for Research after a stint at the National Institutes of Health, first as a senior staff fellow, second as an expert, then a research biologist in the Division of Cancer Biology and Diagnosis, National Cancer Institute.



### **Susan Shinagawa**

Susan Matsuko Shinagawa, a breast cancer *thriver* following primary diagnoses in 1991 and 2001 and a 1997 diagnosis of recurrent disease, is widely recognized as the nation's leading Asian American cancer and chronic pain advocate and activist. She is past chair of the Intercultural Cancer Council (ICC), and co-founder/co-coordinator of the Asian & Pacific Islander National Cancer Survivors Network (APINCSN, a program of the Asian & Pacific Islander American Health Forum). This past spring, Susan concluded five years of service as the (volunteer) national Community Director for the Asian American Network on Cancer Awareness, Research, and Training (AANCART), a National Cancer Institute-funded Special Populations Network.

Susan has received numerous appointments to organizational and governmental advisory councils at the national/federal, state and local levels, and frequently serves in a leadership capacity, including her 1994 inaugural appointments to the California Breast Cancer Research Council (for which she served as Council Chair, 1995-1996), and the California Department of Health Service's Breast & Cervical Cancer Advisory Council, on which she continues to serve. She is an often-invited speaker on cancer and pain issues germane to communities of color and poverty, and she is the recipient of numerous awards for her efforts to achieve equity in healthcare for underserved communities. The CBCRP would like to thank Susan for her tireless efforts on the inaugural advisory council of the CBCRP and her continuing contributions to the program after her tenure ended. Her leadership on the inaugural council and her vision on breast cancer issues have helped to reshape how we approach breast cancer research in California.

# CONCURRENT BREAKOUT SESSIONS

2:00pm–3:30pm

## Session 3—Exploring Causes and Prevention | Room 202

The causes and prevention of breast cancer are intimately linked. By understanding what causes breast tumors to develop, it may be possible to develop an effective preventive strategy. The presentations in this session will explore some types of exposures and human behaviors that can lead to breast tumor development.

### **Moderators:**

Ana Soto, Ph.D., Tufts University

Ann Fonfa, The Annie Appleseed Project

### **Speakers:**

*Influence of Localized DDT Exposure on Breast Cancer*

Vicki Davis, Ph.D., Duquesne University/Cedars-Sinai)

*How Essiac Tea May Affect Tumor Development*

Kristen Kulp, Ph.D., Lawrence Livermore National Laboratory

*Effect of Alcohol on Estrogen-Receptor Positive Breast Cancer*

Shelley Enger, Ph.D., Kaiser Permanente, Southern California

## Session 4—Emerging Topics in Breast Cancer Biology | Room 204

The breast is populated by a variety of different types of cells, each with its own job. By investigating how these different types of cells influence each other's behavior and change as cancer develops, we should be able to devise ways to intervene in the process. This session will describe the types of changes that happen in breast cells that ultimately to breast cancer development and metastasis.

### **Moderators:**

Danny R. Welch, M.D., University of Alabama, Birmingham

Sharon Goodrich, National Breast Cancer Coalition

### **Speakers:**

*Pre-cancerous Changes in the Breast*

Shanaz Dairkee, Ph.D., California Pacific Medical Center


*Interaction of Different Cell Types during Breast Tumor Development*

Mary Helen Barcellos-Hoff, Ph.D., Lawrence Berkeley National Laboratory

*Role of Stem Cells in Breast Cancer Metastasis*

Brunie Felding-Habermann, Ph.D., The Scripps Research Institute

Saturday, September 10, 2005



Uncomfortable or unfamiliar  
with poster presentations  
of scientific research?

[ 15 ]

If so, Advocate Guides have come from around the country to help. All of the Advocate Guides at the "From Research to Action: Seeking Solutions" symposium have reviewed grant applications for the CBCRP and other organizations and will bridge the language barrier between scientists and the general public.

Advocate Guides will:

- lead you through the poster sessions
- orient you to the concept of poster displays of scientific projects
- facilitate discussions between poster presenters and poster viewers



California Breast Cancer Research Program

# POSTER PRESENTATIONS WITH ADVOCATE GUIDES

3:30pm–5:30pm | Hall D

CBCRP investigators will display their research results in the form of posters. Posters will be available for viewing all day, but will be attended by researchers from 3:30 pm – 5:30 pm. Advocate guides will be available during this session to lead groups through the posters and to facilitate discussions between scientists and audience.

CBCRP investigators will attend their posters at the following viewing times:

3:30 pm – 4:30 pm      Sessions A and B

4:30 pm – 5:30 pm      Sessions C and D

## **Advocate Guides (look for the women wearing the leis):**

|                    |  |
|--------------------|--|
| Sandy Blank        | Florida Breast Cancer Resource Network         |
| Susan Cohen        | New York Breast Cancer Network                 |
| Ana Teresa Garcia  | Kohala Family Health Center                    |
| Roberta Gelb       | SHARE  |
| Anne-Marie Kunzler | National Breast Cancer Coalition               |
| Ginny Mason        | Inflammatory Breast Cancer Research Foundation |
| Selma J. Morris    | Breast Health Initiative                       |
| Karin Noss         | Y-ME, National Capitol Area                    |
| Barbara Parker     | Breast Cancer Coalition of North Carolina      |
| Jane Segelken      | Ithaca Breast Care Alliance                    |

# POSTER SESSION A

3:30pm–4:30pm | Hall D

## Basic Breast Biology and Chemoprevention

**A-01**

### **Monitoring Chemical and Oxidative Modifications in Human Estrogen Receptor by Mass Spectrometry**

Christopher C. Benz  
Bradford W. Gibson  
Buck Institute for Age Research

Poster Presenter:  
Christian Atsriku

**A-02**

### **Breast Cancer Lymphovascular Invasion Involves Dual Bone Marrow- and Locally-Derived Primary Stem Cell Vasculogenesis and Secondary Angiogenic Anastomosis**

Sanford H. Barsky  
The Ohio State University/University of California, Los Angeles

**A-03**

### **Breast Cancer Prevention with Phytochemicals in Grape Seed Extract**

Shiuan Chen  
Beckman Research Institute of the City of Hope

**A-04**

### **Breast Cancer Prevention with Phytochemicals in Mushrooms**

Shiuan Chen  
Beckman Research Institute of the City of Hope

**A-05**

### **Molecular Basis of the Chemoprotective Effect of White Button Mushrooms Against Breast Cancer**

Shiuan Chen  
Beckman Research Institute of the City of Hope

**A-06**

### **Preventing Breast Cancer with Ginseng**

Michael DeGregorio  
University of California, Davis

**A-07**

### **Breast Cancer Prevention with Estrogen**

Satyabrata Nandi  
University of California, Berkeley

**A-08**

### **Use of Accelerator Mass Spectrometry to Assay Estrogen Response in Breast Cancer Cells**

Paul T. Henderson  
Lawrence Livermore National Laboratory

**A-09**

### **Slit2 and Netrin1 Act as Adhesive Cues during Mammary Ductal Development**

Lindsay Hinck  
University of California, Santa Cruz

**A-10**

### **Dietary Fat Type Can Alter Antitumor Efficacy of Conjugated Linoleic Acid**

Kent Erickson  
University of California, Davis

Poster Presenter:  
Neil Hubbard

**A-11**

### **SR13668, A Novel Dietary Indole Analog Potently Suppresses Breast Tumor Growth and Inhibits Activation of Cell-Survival-Promoting Oncoprotein Akt**

Ling Jong  
SRI International

**A-12**

### **Control of Aromatase Expression in Breast Cancer**

Ikuko Kijima  
Beckman Research Institute of the City of Hope

[ 17 ]

# POSTER SESSION A

3:30pm–4:30pm | Hall D

## Basic Breast Biology and Chemoprevention

**A-13**

### **The Gene Expression Programs of Stromal and Epithelial Microenvironments in the Developing Mammary Gland**

Hosein Kouros-Mehr  
University of California, San Francisco

**A-14**

### **Inhibition of the Non-Receptor Tyrosine Kinase Src in Breast Carcinoma Cells Causes Restoration of Mammary Acinus Architecture in Three-Dimensional Basement Membrane Cultures.**

Steven Martin  
University of California, Berkeley

Poster Presenter:  
Leonard Kusdra

**A-15**

### **Some Insights on the Role of Hormone Receptors in Normal Mammary Gland Development and Neoplasia**

Carlos Ortiz de Solorzano  
Lawrence Berkeley National Laboratory

Poster Presenter:  
Rodrigo Fernandez-Gonzales

**A-16**

### **Differential Requirement of Murine Mammary Glands for GLI3**

Jacqueline Veltmaat  
Saban Research Institute/Childrens Hospital Los Angeles

**A-17**

### **Differential Requirement of Murine Mammary Glands for FGF10**

Saverio Bellusci  
Saban Research Institute/Childrens Hospital Los Angeles

Poster Presenter:  
Jacqueline Veltmaat

**A-18**

### **Is Bovine Leukemia Virus in Human Breast Tissue a Risk for Breast cancer?**

Gertrude Buehring  
University of California, Berkeley

**A-19**

### **Novel Approach to Analyze Estrogen Action in Breast Cancer**

Brian Eliceiri  
La Jolla Institute for Molecular Medicine

**A-20**

### **Role of Integrins in Lymphangiogenesis During Breast Cancer**

Barbara Garmy-Susini  
University of California, San Diego

**A-21**

### **High Resolution Imaging of Human Tumor Formation and Angiogenesis in a Novel Zebrafish Model**

Konstantin Stoletov  
The Scripps Research Institute



# POSTER SESSION B

3:30pm–4:30pm | Hall D

## Gene Targeting, Breast Cancer Detection and Prognosis

**B-01**

### **Nuclear Localization of Rad51B is Independent of Rad51C and BRCA2**

Joanna Albala  
University of California, Davis

**B-02**

### **Prognostic Value of Ras Activation in Breast Cancer**

Anne Wallace  
Gerry Boss  
University of California, San Diego

**B-03**

### **Dietary Indole I3C Reduces Metastatic Capacity of MDA-MB-231 Breast Cancer Cells**

Christine Brew  
University of California, Berkeley

**B-04**

### **Unanticipated Link Between Beta3 Integrin and Cathepsin B Localization: Implications for Breast Cancer Metastasis**

Jason Bush  
The Burnham Institute

**B-05**

### **Genomic and Transcriptional Events Associated with Poor Clinical Responses to Conventional Therapies**

Koei Chin  
University of California, San Francisco

**B-06**

### **Cathepsin D and IGF-II Role in Breast Cancer Survival among African American**

Daisy D. De León  
Loma Linda University

**B-07**

### **Enhanced HER2-Directed Liposomal Therapeutics**

Daryl C. Drummond  
Hermes Biosciences, Inc

**B-08**

### **The Discovery of Novel DNA Oxidation Products in Breast Cancer Cells Using Ultrasensitive Detection by Accelerator Mass Spectrometry**

Paul T. Henderson  
Lawrence Livermore National Laboratory

Poster Presenter:  
Sang Soo Hah

**B-09**

### **LEA.135 Expression: Identifies Low-Risk Patients with Breast Ductal Carcinoma In Situ**

Syed Ashraf Imam  
Huntington Medical Research Institutes

**B-10**

### **Comprehensive Breast Screening in Women at High Inherited Risk**

James Ford  
Sylvia Plevritis  
Stanford University

Poster Presenter:  
Allison Kurian

**B-11**

### **Targeting of Epigenetic Silencing to Cell Cycle Regulatory Genes**

David Liston  
Salk Institute for Biological Studies

**B-12**

### **Cryptic Peptides-Based Vaccines for Breast Tumor Treatment**

Joseph Lustgarten  
Sidney Kimmel Cancer Center

[ 19 ]

Saturday, September 10, 2005

# POSTER SESSION B

3:30pm–4:30pm | Hall D

## Gene Targeting, Breast Cancer Detection, and Prognosis

### B-13

#### Identifying Metastatic Breast Cancer Cells from Peripheral Blood

Kristen S. Kulp  
Lawrence Livermore National Laboratory

Poster Presenter:  
Jennifer Montgomery

### B-14

#### Immunophototherapy for Breast Cancer

Edward Nelson  
University of California, Irvine

### B-15

#### A New Tandem Affinity Tag to Study Proteome-Wide Ubiquitylation Modification Profiles

Peter Kaiser  
University of California, Irvine

Poster Presenter:  
Christian Tagwerker

### B-16

#### Diaryl Ureas as Anti-Breast Cancer Agents

Jack Youngren  
University of California, San Francisco

### B-17

#### Nur77-derived Peptides Induce Breast Cancer Cell Apoptosis by Targeting Bcl-2 Conformation

Xiao-kun Zhang  
The Burnham Institute

### B-18

#### Understanding Telomere Dynamics in Normal Breast and in Breast Cancer

Steven Artandi  
Stanford University

### B-19

#### The Akt Pathway in Breast Cancer: a Tissue Array Based Analysis

Shikha Bose  
Cedars Sinai Medical Center

### B-20

#### Integrated Proteomic and Metabolomic Analysis of Breast Cancer

Kyle Chiang  
The Scripps Research Institute

### B-21

#### Loss of p16INK4a Uncouples Centrosome Duplication and DNA Replication Cycles and Drives Genomic Instability

Kimberly McDermott  
University of California, San Francisco

### B-22

#### Evaluating the Role of the RIN1 Gene in Breast Cancer

John Colicelli  
University of California, Los Angeles

Poster Presenter:  
Marc Milstein

### B-23

#### A Role for p53 and Splicing Factor SAP145 in Breast Cancer

Lan Truong  
University of California, Irvine

### B-24

#### A Streamlined Functional Proteomics Platform for Profiling Enzyme Activities in Human Breast Cancer

Benjamin Cravatt  
Stephanie Jefferey  
The Scripps Research Institute

Poster Presenter:  
BinQing Wei

Saturday, September 10, 2005

# POSTER SESSION C

4:30pm–5:30pm | Hall D

## Breast Cancer Therapies and Health Services

### C-01

#### **Understanding How Socioeconomics and Ethnicity Affect Tumor Endocrine Status**

Vinona Bhatia  
University of California, San Francisco

### C-02

#### **Chinese Herb/Chemotherapy Interactions in Breast Cancer**

Michael Campbell  
University of California, San Francisco

### C-03

#### **BreastCancerTrials.org: Feasibility of a Clinical Trial Matching Tool**

John Park  
Morton Lieberman  
University of California, San Francisco

Poster Presenter:  
Ellyn J. Cohen

### C-04

#### **Functional Implications of Taxane-induced Peripheral Neuropathy**

Meredith Edwards Wampler  
University of California, San Francisco

### C-05

#### **International Locally Advanced Breast Cancer Program: the Role of BCRP**

Silvia Formenti  
Franco Muggia  
Peter Danenberg  
New York University School of Medicine

### C-06

#### **An Analysis of Patient Perspective and Experience Using the Laser Breast Scanner**

Bruce Tromberg  
Nola Hylton  
John Butler  
Beckman Laser Institute  
Poster Presenter: Debbi Gordon

### C-07

#### **California Acupuncturists Who Treat Patients with Cancer**

Michael Johnston  
University of California, Los Angeles  
Poster Presenter:  
Kai-Kit Hui

### C-08

#### **Latinas and DCIS: Qualitative Analysis of Treatment Decision-Making and Satisfaction with Care**

Celia P. Kaplan  
University of California, San Francisco  
Poster Presenter:  
Jennifer Livaudais

### C-09

#### **Studying Breast Cancer Treatment in the Underserved: Methodologic Challenges**

Rose C. Maly  
David Geffen School of Medicine at University of California, Los Angeles

### C-10

#### **Investigation of the Synergistic Effect of Cisplatin and Benzo[a]pyrene in Human Breast Cancer Cells**

Uta Hellmann-Blumberg  
University of the Pacific  
Poster Presenter:  
Smita Matkar

# POSTER SESSION C

4:30pm–5:30pm | Hall D

## Breast Cancer Therapies and Health Services

### C-11

#### **Longitudinal Studies of Cognition and Adjuvant Therapy in Patients with Breast Cancer**

Rebecca Rausch  
University of California, Los Angeles

### C-12

#### **Community Collaboration in Clinical Trial Design: GnRH Agonist Therapy to Prevent Chemotherapy Induced Amenorrhea (CIA)**

Hope S. Rugo  
University of California, San Francisco

### C-13

#### **MRI Monitoring of Neoadjuvant Chemotherapy in Breast Cancer Using the AC followed by Taxane + Carboplatin ± Trastuzumab Regimen**

Min-Ying Lydia Su  
University of California, Irvine

### C-14

#### **The Clinical Epidemiology of the Structure of Breast Cancer Care**

Katherine L. Kahn  
University of California, Los Angeles

Poster Presenter:  
Diana Tisnado

### C-15

#### **Listening to Young Survivors: Impact of Ovary-Toxic Chemotherapy and Likely Interest in a Trial of Ovary-Sparing Chemotherapy.**

Lucy Berlin  
Hope Rugo  
Lynn Westphal  
Young Moms with Breast Cancer; University of California, San Francisco; and Stanford University

# POSTER SESSION D

4:30pm–5:30pm | Hall D

## Breast Cancer Risk Identification and Survivorship

**D-01**

### **Pride and Depression in Primary Breast Cancer: Eliciting Pride and Examining Facial Expression**

Janine Giese-Davis  
Stanford University

Poster Presenter: Rebecca Allen

**D-02**

### **African American Women Using The Every Woman Counts Program: Who Are They?**

Priscilla Banks  
Carol Somkin  
African American Advisory Committee and Kaiser Permanente

**D-03**

### **Exposure to Serpentinites: An Environmental Risk Factor**

Janice Barlow  
Scott Fendorff  
Marin Breast Cancer Watch and Stanford University

**D-04**

### **Psychosocial Support for Underserved Women with Breast Cancer: A Role for Art**

Kate Collie  
Stanford University

**D-05**

### **Role of Community Resources and Risk Factors on Breast Carcinoma Stage at Diagnosis**

Pamela Davidson  
University of California, Los Angeles

**D-06**

### **Breast Cancer Screening Outcomes in California in 1990 and 2000: Trends Over Time and the Role of Community Level Determinants**

Pamela Davidson  
University of California, Los Angeles

Poster Presenter: Yvonne Flores

**D-07**

### **Migration History, Acculturation, and Breast Cancer Risk in Hispanic Women**

Esther M. John  
Northern California Cancer Center

**D-08**

### **Self Help Online: An Outcome Evaluation of Breast Cancer Bulletin Boards**

Morton Lieberman  
Mitch Golant  
University of California, San Francisco and The Wellness Community–National

**D-09**

### **Construction of Meaning in Metastatic Breast Cancer: A Multidisciplinary Approach**

Jill Mitchell  
University of California, Los Angeles

**D-10**

### **The IGF Pathway and Breast Cancer Risk in African Americans**

Susan Neuhausen  
University of California, Irvine

[ 23 ]

## POSTER SESSION D

4:30pm–5:30pm | Hall D

### Breast Cancer Risk Identification and Survivorship

#### D-11

##### **Peer Mentors Promoting Breast Cancer Clinical Research**

Michele Rakoff  
Annette Maxwell  
John Link  
Breast Friends; University of California, Los Angeles; and MemorialCare Breast Cancer Network

#### D-13

##### **Reducing Health Disparities Among Korean Women**

Soo-Young Chin  
Annette Maxwell  
KHEIR Center and University of California, Los Angeles

#### D-14

##### **Does a Peer Navigator Improve Quality of Life at Diagnosis?**

David Spiegel  
Caroline Bliss-Isberg  
Stanford University and WomenCARE  
Poster Presenter:  
Janine Giese-Davis

#### D-15

##### **Involving Physicians in Recruiting Women with Breast Cancer to a Psychosocial Clinical Trial**

David Spiegel  
Caroline Bliss-Isberg  
Stanford University and WomenCARE  
Poster Presenter:  
Lynne Wittenberg

#### D-16

##### **Marital Status Predicts Change in Depression and Trauma Symptoms in Women With Breast Cancer and their Peer Counselors**

Caroline Bliss-Isberg  
David Spiegel  
Stanford University  
Poster Presenter:  
Lynne Wittenberg

#### D-17

##### **Assessing the Impact of Shame and Guilt on Recovery**

Janine Giese-Davis  
Stanford University  
Poster Presenter:  
Maya Yutsis

#### D-18

##### **Soy Intake, Body Size, and Use of Menopausal Hormones and Breast Cancer Risk in Asian American Women**

Anna H. Wu  
University of Southern California

#### D-19

##### **Expanding Rural Access: Distance Delivery of Support Groups**

Mary Anne Kreshka  
Susan Ferrier  
Cheryl Koopman  
Sierra College, Northern Sierra Rural Health Network, and Stanford University

---

## CLOSING CEREMONIES

5:30pm–6:00pm | Hall C

### **Raffle**

(need not be present to win)

### **Door Prizes**

(must be present to win)

**Saturday, September 10, 2005**

Program  
Sunday, September 11, 2005

**Hyatt Regency Sacramento  
at Capitol Park**

FREE RADICALS

STEM CELLS

GENETIC ABERRATION

Sunday, September 11, 2005

**PROGRAM**  
**Hyatt Regency Sacramento**  
**at Capitol Park**

**Workshop 6—Community Research Collaboration (9:00am–12:00pm)**  
**Golden State AB**

This workshop will bring together Community Research Collaboration (CRC) award recipients, past and present, as well as those interested in applying for a CRC, to discuss strategies for applying for and conducting community-based participatory research in breast cancer.

All interested researchers and community members are encouraged to attend!

**9:00am–9:15am . . . . . Welcome and Introductions**

Moderator: Marj Plumb, CRC Community Consultant

Marion Kavanaugh-Lynch, M.D., MPH, Director, California Breast Cancer Research Program

Walter Price, Dr.P.H., Community Initiatives Manager, California Breast Cancer Research Program

**9:15am–9:45am . . . . . CRC Award Application Process**

Natalie Collins, M.S.W., CRC Outreach and Technical Assistance Coordinator

**9:45am–10:15pm . . . . . Assessing Impact and Outcomes: Report of the CRC Evaluation**

Marj Plumb, CRC Community Consultant

**10:15am–11:30pm . . . . . Successful CRC Partnerships**

Developing and Maintaining Healthy Partnerships: Creating structures and opportunities to maintain strong partnerships, dealing with conflicts, and barriers to collaboration.

Strategies for Broader Community Involvement: Integrating all levels of the CBO and including broader community involvement (lay and professional)

Having Impact/Disseminating Results: How to work collaboratively after the study is over, common challenges, and balancing scientific vs. lay dissemination strategies

**Speakers:**

*Breast Health Project for Hmong Women and Men*

Mary Anne Foo, M.P.H., CHES, Orange County Asian & Pacific Islander Health Alliance, Community

Marjorie Kagawa-Singer, Ph.D., University of California, Los Angeles

*Decision Support in Rural Underserved North Coast Counties*

Sara O'Donnell, Mendocino Cancer Resource Center

Lauren Franklin, MHU Collaborative, Research Study Coordinator

Jeff Belkora, Ph.D., University of California, San Francisco

**11:30am–12:00pm . . . . . Q & A**

**12:00pm–1:00pm . . . . . Lunch and small group discussions (Regency EF)**

**Sunday, September 11, 2005**



**Workshop 7–Navigating the CBCRP  
Application Process (9:00am–12:00pm) | Big Sur AB**

Laurence Fitzgerald, Ph.D., Core Funding Manager, California Breast Cancer Research Program

Don't let poor grantsmanship prevent your great research ideas from being funded!

Learn how to improve your grant application strategy and address the requirements of the CBCRP. Find out what happens to your application after submission.

This workshop session will include an overview of the mission of the CBCRP, our funding philosophy, our award types and research priority issues, how applications are peer reviewed, and how funding decisions are made by our advisory council. You will gain an understanding of review committee procedures and the criteria they use for determining scientific merit. We will explain why CBCRP uses “scientific merit components” to help make funding decisions. The programmatic review process by our advisory council is a critical element that is often overlooked by applicants. Data on grant application submissions and funding over the past several years will be provided.

A presentation will be followed by questions and answers. Handouts and details of CBCRP's new online, Web-based application procedure will be available.

**12:00 pm–1:00 pm . . . . .Lunch and small group discussions (Regency EF)**

# ABOUT THE CBCRP

## The Breast Cancer Research Program

The mission of the CBCRP is to eliminate breast cancer by leading innovation in research, communication, and collaboration in the California scientific and lay communities.

- The CBCRP is the largest state-funded research effort in the nation and is administered by the University of California, Office of the President
- The CBCRP is funded through a portion of the tobacco tax, voluntary tax check-off on personal income tax forms, and individual contributions
- The tax check-off, included on the personal income tax form since 1993, has drawn over \$5 million for breast cancer research
- Ninety-five percent of our revenue goes directly to funding research and education efforts
- The revenue is used to make grants for California scientists and community researchers to find better ways to prevent, treat and cure breast cancer
- Since 1994, the California CBCRP has awarded over over \$164 million for 663 grants and 8 supplemental awards to 73 California research institutions and community organizations. The CBCRP supports innovative breast cancer research—like cow viruses, Tibetan herbs, snake venom—that might otherwise go unfunded. With continued investment, the CBCRP will work to find better ways to prevent, treat, and cure breast cancer

## Breast Cancer Research Advisory Council Members

To continue to fund innovative research, the California Breast Cancer Research Program (CBCRP) must rely on advisory committee. The advisory Breast Cancer Research Council is responsible for tracking the trends and opportunities for progress that arise in the breast cancer community, making funding recommendations, and planning future directions of the CBCRP. The advisory council is made up of 15 people selected to represent those affected by breast cancer and the institutions that can help find a solution.

### Breast Cancer Research Council

Chair, Debra Oto-Kent, M.P.H., *nonprofit health organization representative*

Vice Chair, Jacqueline Papkoff, Ph.D., *private industry representative*

Dorothy Bainton, M.D., *scientist/clinician*

Vicki Boriack, *advocate*

Moon S. Chen, Jr., Ph.D., M.P.H., *scientist/clinician*

Michael Figueroa, M.D., *medical specialist*

James Ford, M.D., *scientist/clinician*

Janet Howard-Espinoza, *advocate*

John W. Morgan, Dr.P.H., *nonprofit health organization representative*

Amy D. Kyle, Ph.D., M.P.H., *scientist/clinician*

Kim Pierce, *advocate*

Kurt Snipes, Ph.D., *DHS member ex officio*

Kathy Walters, J.D., *advocate*

Lisa Wanzor, *advocate*

Christine White, M.D., *private industry representative*

### CBCRP Staff

#### Director

Marion H.E. Kavanaugh-Lynch, M.D., M.P.H.

#### Staff

Courtney Bennett, Ph.D.

DeShawn Boyd

Natalie Collins, M.S.W.

Janna Cordeiro, M.P.H.

Mary Daughtry

Brenda Dixon-Coby

Carol D'Onofrio, Dr.P.H.

Lyn Dunagan

Laurence Fitzgerald, Ph.D.

Maurice Matthews

Katherine McKenzie, Ph.D.

Eric Noguchi

Joyce Price

Walter Price, Dr.P.H.

Roslyn Roberts

Jelena Simjanovic

Sharon Simms, M.P.A.



California Breast Cancer Research Program  
University of California, Office of the President  
300 Lakeside Drive, 6th Floor  
Oakland, CA 94612-3550

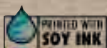
Phone: 510 987-9884

Toll-free: 888 313-2277

Fax: 510 587-6325

E-mail: [bcrcp@ucop.edu](mailto:bcrcp@ucop.edu)

Website: [www.bccrp.org](http://www.bccrp.org)



Printed on chlorine-free recycled paper with soy-based ink